



*Selling*  
**130 Yearling Bulls**  
**24 Coming Two Year Old**  
**Angus Bulls**  
*and*  
**50 bred heifers from**  
**Moore Livestock**  
**due to calve May 12 - June 15**  
**all bred to VDAR bulls**

**Van Dyke Angus Ranch**  
**Cattleman's Advantage**  
*Bull Sale*  
**February 20, 2025**  
12:30 pm MST • Manhattan, Montana

**DVAuction**  
*Broadcasting Real-Time Auctions*

**VDAR.com**





**The Crabtree Family**  
Tim, Jaynee, Shirlee & Ruth



**The Van Dyke Family**  
Lee, Shirlee, Lindsee and crew



**The Jakubiec Family**  
Kelby, Brittnee,  
Bradlee & William



**The Wulff Family**  
Tom, Sherry & Lexie



**The Pera Family**  
Charles, Kasey,  
Luca, Esmé &  
Marsali



**The Feddes Family**  
Paul & Deb with grandchildren Eric, Lydia,  
Caleb, Zeke, Nora & Zoe



**The Feddes Family**  
Nate, Aly, Eric, Caleb & Lydia



**Clayton Reynolds and Daryl**





www.VDAR.com

# Van Dyke Angus Ranch Cattleman's Advantage

## Bull Sale

# February 20, 2025

12:30 pm MST • Manhattan, Montana

### Tom Wulff

12393 Frontage Rd, Manhattan, MT 59741  
406.580.1606 • twulff@vdar.com

### Lee Van Dyke

8295 Highline Rd, Manhattan, MT 59741  
406.579.2585 • lvandyke@vdar.com

### Tim Crabtree

406.579.0798  
tcrabtree@vdar.com

### Charles Pera

406.922.7077

### **Sale Day Phones**

406.580.1606 Tom Wulff (cell)  
406.579.2585 Lee Van Dyke (cell)  
406.579.0798 Tim Crabtree (cell)  
406.922.7077 Charles Pera (cell)

### **Auctioneer**

Roger Jacobs  
406.698.7686

### **Retained Interest**

Van Dyke Angus reserves the right to 1/3 semen interest in all sale bulls. The 1/3 semen interest is a semen revenue sharing interest only, with 100% of the bull's salvage value belonging to the buyer.

### **Sale Location**

The sale will be held at Van Dyke Angus Ranch, located 1 mile east of Manhattan, MT, on the Frontage Road. See map page 40.

### **Terms & Conditions**

All cattle sell under the standard terms & conditions as adopted by the American Angus Association.

### **Sale Accommodations**

- La Quinta Inn and Suites, Belgrade, MT 406.388.2222
- Holiday Inn Express, Belgrade, MT 406.388.7100
- Super 8, Belgrade, MT 406.368.1493

### **Settlement & Delivery**

All bulls are to be settled for on sale day unless prior arrangements have been made. Van Dyke Angus is offering to feed, maintain and fertility test for an approximate March 15 delivery. Free delivery is available in Montana and surrounding states.

**All bulls are fully guaranteed for one full breeding season.**

### **Transportation**

Bozeman is served by Alaska, Delta, Frontier, Southwest and United Airlines at Bozeman Yellowstone International Airport, one mile east of Belgrade or 8 miles northwest of Bozeman.

### **Food & Refreshments**

Will be available throughout the day. A delicious tri-tip lunch will be served at noon.

### **EPDs**

EPDs are current as of 1/23/25.  
Updated EPDs can be viewed at [www.Angus.org](http://www.Angus.org)

### **Bidding Info**

If you're unable to attend, bids can be placed with VDAR, with any livestock representative or with Ron Frye. You may also bid online through DVAuction as shown below.

### **Livestock Publication Representatives**

Kurt Kangas, *Angus Journal* - 406.366.4190  
John Goggins, *Western Livestock Reporter* - 406.373.5000  
Devin Murnin, *Western Livestock Journal* - 406.696.1502  
Andy Rest, *Cattle Business Weekly* - 406.670.5678  
Jeff Thomas, *Prairie Star/Farm & Ranch Guide* - 406.581.8859  
Ron Frye Marketing, 406.600.7514

### **Genetic Defects**

The American Angus Association has identified different genetic defects in the Angus breed. We are fortunate that we have very few of the affected pedigrees. However, when there is a possibility, all animals involved have been tested free of all known genetic defects.



**Can't make the Sale?** Let DVAuction bring the sale to you!  
**Busy during the Sale?** Let DVAuction represent your bid!

**Visit [www.dvauction.com](http://www.dvauction.com) and Register**

1. Create an account at [www.dvauction.com](http://www.dvauction.com) under "create new account" tab
2. Apply for bidding by clicking "apply for bidding" in the upper left corner of your screen, at least 24 hours prior to the auction
3. Tune into the sale and make your purchases!

**For General Questions, Please Contact Our Office:**  
**(402) 316-5460 or [support@dvauction.com](mailto:support@dvauction.com)**

*\*High Speed Internet Access Required*

Welcome to the 2024 Van Dyke Angus Ranch Bull Sale!

It's nearly impossible to pass the VDAR sign in front of the ranch or drive down the road to the sales facility without reflecting on the rich history of VDAR! Decades upon decades have solidified their reputation not only as purebred producers but as leaders in an ever-evolving industry.

There are key factors that have contributed to their leadership in the Angus industry. First and foremost is their unwavering focus on the Angus female. For decades, VDAR has devoted itself to perfecting the dams of the bulls being offered in this year's sale on February 20th. VDAR females have made a lasting impact on the Angus breed, with cow families developed under the VDAR banner fundamentally changing the industry. This steadfast commitment to their principles is a testament to their enduring vision and dedication.

A story that exemplifies their passion for the "momma cow" goes like this: A potential bull buyer once arrived at the ranch to preview the sale offering. Lee loaded him up and headed out to show him the cows. The gentleman asked where they were going, and Lee replied, "To look at my cows. If you don't like them, you probably shouldn't buy your bulls here." While this might seem extreme by some standards, it perfectly encapsulates the sentiment and philosophy at VDAR.

Next to building the best females possible, customer service is a cornerstone of VDAR's success. As the cattle industry evolves, the most valuable insights often come from commercial cattlemen—the front lines of the supply chain. Feedback from feeders on how calves perform in the feedlot provides purebred breeders with a clear understanding of their bulls' impact. Moreover, commercial producers often retain a percentage of their heifer calf crop as replacements or market them as such. This is where the greatest distinction between breeders becomes evident.

VDAR's customer base is legendary for its loyalty. Many buyers have been customers for decades, with relationships spanning generations. While many breeders claim to stand behind their bulls, VDAR goes above and beyond to ensure customer satisfaction.

Finally, at the heart of VDAR is family. Their mission can be summed up simply: "Leave it better than you found it."

If I can assist you in any way as you prepare for this sale, please don't hesitate to call, text, or email.

**RFM**  
RON FRYE MARKETING  
406.600.7514

## Special Female Feature from Moore Livestock, Two Dot, Montana

### **A** 50 ANGUS BRED HEIFERS to Calve May 12 - June 15

All heifers are sired by Van Dyke Angus bulls  
and bred to Van Dyke Angus bulls.

Heifers will sell by calving date.

Buyer will be able to buy five or more head  
on a gate cut with the winning bid.

*For more information,  
contact Sanford Moore  
406.224.0344.*

*Videos are available at  
[www.moorelivestock.com](http://www.moorelivestock.com)*



*The Moore Family  
Sue, Katya, Sanford, Steve & Rachel*

VDAR



We are extremely excited to be able to offer you one of the most unique set of genetics that we can provide.

This set of 24 bulls is from our ET program out of the most elite, proven cows in our herd. They were raised at the base of the Crazy Mountains by Moore Livestock near Two Dot, MT. They ran on grass there through the winter of 2023 and were then run on native feed the summer of 2024. We brought these bulls home in September and have been feeding them a roughage ration until sale time.

We believe the development of these bulls will allow them to be more prolific breeders and be much longer-lived than most bulls selling anywhere in the country.

Be sure and study this group of bulls on their video and don't miss this special opportunity!



### VDAR SHADOW 5943

5943 +20815990 04/01/23  
 N BAR EMULATION EXT#  
**N BAR SHADOW X4124**  
 N BAR ENCHANTRESS 4908#  
 V D A R CEDAR WIND 8111#  
**V D A R LASS 4100**  
 V D A R LASS 2500

EPDs	Dam	Sire
Birth	-0.6	-0.7
Wean	+60	+31
Year	+105	+46
Milk	+32	+18

CED	Birth	Wean	Year	Milk	Scrotal
+7	-0.9	+36	+63	+22	+5.0
	Marb	RE	Fat		
	+0.06	+0.08	+0.038		
\$ Wean	\$ Feedlot	\$ Grid	\$ Beef		
+35	+60	+16	+77		



### VDAR EXT 6106 4783

4783 +20832474 03/29/23  
 N BAR EMULATION EXT#  
**WULFFS EXT 6106#**  
 WULFFS ERICA DIANNA C116  
 KOU PAL JUNE AU 797#  
**V D A R BEAUTY 4321#**  
 V D A R BEAUTY 0355

EPDs	Dam	Sire
Birth	+0.7	-0.7
Wean	+72	+45
Year	+123	+80
Milk	+30	+26

CED	Birth	Wean	Year	Milk	Scrotal
+8	+0.6	+62	+102	+24	+5.4
	Marb	RE	Fat		
	-.40	+0.63	-.021		
\$ Wean	\$ Feedlot	\$ Grid	\$ Beef		
+63	+64	+5	+69		



### VDAR SHADOW 5973

5973 +20815993 04/06/23  
 N BAR EMULATION EXT#  
**N BAR SHADOW X4124**  
 N BAR ENCHANTRESS 4908#  
 V D A R CEDAR WIND 8111#  
**V D A R LASS 4100**  
 V D A R LASS 2500

EPDs	Dam	Sire
Birth	-0.6	-0.7
Wean	+60	+31
Year	+105	+46
Milk	+32	+18

CED	Birth	Wean	Year	Milk	Scrotal
+11	-2.2	+44	+67	+29	+3.0
	Marb	RE	Fat		
	-.17	+0.21	+0.025		
\$ Wean	\$ Feedlot	\$ Grid	\$ Beef		
+56	+51	+8	+59		



### V-D-A-R-Beauty-4321



Dam of Lots 3, 39 and 49

**VDAR Beauty 4321**, a true powerhouse! Her first calf, VDAR Cedar Wind 5126, was the high-selling bull at our 2017 bull sale. She was the dam of our high-selling female at our 2022 Heart of the Herd Cow Sale. She is also the granddam of VDAR Kawlga 2141. 4321's seven natural calves have had ratios of birth 101, weaning 110 and yearling 109.

### V-D-A-R-Lass-4100



Dam of Lots 1, 2, 27, 112. Granddam of Lots 1, 2 and 3 **VDAR Lass 4100** is a tremendous 11-year-old. She had a 359 day calving interval before entering the donor program. 4100 has a record of 100 @ birth, 104 @ weaning, and 105 @ yearling. Her granddam was here until 10 years old, and she did a tremendous job for us. Her great-granddam was in production until 17 years old as a donor for Ginger Hill Angus in Virginia.



**4****VDAR TWENTY TWENTY 5893**

5893 +20718284 04/03/23

VDAR HIGH CALIBER  
**VDAR TWENTY TWENTY 2020**  
V D A R LASS 2579#

V D A R CEDAR WIND 8111#

**V D A R SHANNON 4128**

V D A R SHANNON 2534

EPDs	Dam	Sire
Birth	-1.9	+4.1
Wean	+45	+58
Year	+75	+107
Milk	+30	+29

CED	Birth	Wean	Year	Milk	Scrotal
+15	-0.5	+54	+90	+34	+67
Marb		RE		Fat	
+.66		-.01		+.026	
\$ Wean	\$ Feedlot	\$ Grid	\$ Beef		
+67	+69	+45	+113		

ANGUSGS  
Powered by Nogen GenCoast**V-D-A-R-Shannon-4128**

Dam of Lot 4

**5****VDAR SONNY BOY 4843**

4843 +20829426 04/03/23

V D A R HERO 7072

**V D A R SONNY BOY 1194**

V D A R LASS 2582

KOU PAL JUNE AU 797#

**V D A R LUCY 4361**

V D A R LUCY 0326

EPDs	Dam	Sire
Birth	+1.9	+2.4
Wean	+67	+57
Year	+107	+108
Milk	+30	+27

CED	Birth	Wean	Year	Milk	Scrotal
+8	+1.5	+65	+111	+31	+20
Marb		RE		Fat	
-.01		+.44		+.005	
\$ Wean	\$ Feedlot	\$ Grid	\$ Beef		
+66	+84	+19	+103		

ANGUSGS  
Powered by Nogen GenCoast**V-D-A-R-Lucy-4361**

Dam of Lot 5

**VDAR Lucy 4361** had a calving interval of 363 on seven calves. She was one of our high-selling females at our 2022 Heart of the Herd Cow Sale, selling to Luke Kovarick of Ord, Nebraska.

She is the dam of the high-selling bred heifer at the 2019 NILE Female Sale to Dixie Farms, Gloster, Louisiana.

**6****VDAR MANHATTAN 5883**

5883 +20718283 04/03/23

W R A MIRROR IMAGE T10#

**VDAR MANHATTAN 1379**

V D A R LASS 4113#

V D A R CEDAR WIND 8111#

**ECC MIX WIX 1107-408**

VDAR MISS WIX 1107

EPDs	Dam	Sire
Birth	+3.7	-0.2
Wean	+66	+53
Year	+112	+84
Milk	+28	+32

CED	Birth	Wean	Year	Milk	Scrotal
+2	+3.1	+74	+120	+33	+81
Marb		RE		Fat	
+.05		+.35		-.054	
\$ Wean	\$ Feedlot	\$ Grid	\$ Beef		
+73	+82	+25	+107		

ANGUSGS  
Powered by Nogen GenCoast**7****VDAR MANHATTAN 5903**

5903 +20718285 04/09/23

W R A MIRROR IMAGE T10#

**VDAR MANHATTAN 1379**

V D A R LASS 4113#

V D A R CEDAR WIND 8111#

**ECC MIX WIX 1107-408**

VDAR MISS WIX 1107

EPDs	Dam	Sire
Birth	+3.7	-0.2
Wean	+66	+53
Year	+112	+84
Milk	+28	+32

CED	Birth	Wean	Year	Milk	Scrotal
+5	+2.1	+70	+108	+29	+33
Marb		RE		Fat	
+.71		+.14		-.015	
\$ Wean	\$ Feedlot	\$ Grid	\$ Beef		
+74	+72	+52	+124		

ANGUSGS  
Powered by Nogen GenCoast**ECC Mix Wix 1107-408**

**ECC Mix Wix 1107-408**, dam of Lots 6 and 7, doesn't carry the VDAR prefix, but she's all ours. Her mother was born in 2001 and sold to Louisiana as a donor cow. We purchased 408 as a bred heifer in 2016, she had her first calf in the trailer on the way home and has never looked back. She's now 11 with a production record of 103 on weaning and yearling.



VDAR

**8****VDAR FA MANHATTAN 6123**

6123 +20718286 03/27/23

W R A MIRROR IMAGE T10#

**VDAR MANHATTAN 1379**

V D A R LASS 4113#

V D A R STOUT 1623

**VDAR PF LINDA 6440#**

V D A R PF LINDA 9710

EPDs	Dam	Sire
Birth	+3.5	-0.2
Wean	+60	+53
Year	+109	+84
Milk	+21	+32

CED	Birth	Wean	Year	Milk	Scrotal
+12	-0.9	+54	+94	+38	+1.71
Marb		RE		Fat	
+0.05		-0.15		+0.038	
\$ Wean	\$ Feedlot	\$ Grid	\$ Beef	ANGUSGS	
+67	+65	+13	+78	Powered by Meggen GeneCook	

**11****VDAR MANHATTAN 5933**

5933 +20772138 03/30/23

W R A MIRROR IMAGE T10#

**VDAR MANHATTAN 1379**

V D A R LASS 4113#

GINGER HILL TREASURE 233

**VDAR LASS 6499#**

V D A R LASS 4100

EPDs	Dam	Sire
Birth	-1.9	-0.2
Wean	+57	+53
Year	+95	+84
Milk	+26	+32

CED	Birth	Wean	Year	Milk	Scrotal
+11	-0.3	+47	+78	+28	+1.29
Marb		RE		Fat	
+0.42		-0.16		+0.018	
\$ Wean	\$ Feedlot	\$ Grid	\$ Beef	ANGUSGS	
+54	+41	+32	+72	Powered by Meggen GeneCook	

**9****VDAR FA MANHATTAN 6133**

6133 +20718287 03/30/23

W R A MIRROR IMAGE T10#

**VDAR MANHATTAN 1379**

V D A R LASS 4113#

V D A R STOUT 1623

**VDAR PF LINDA 6440#**

V D A R PF LINDA 9710

EPDs	Dam	Sire
Birth	+3.5	-0.2
Wean	+60	+53
Year	+109	+84
Milk	+21	+32

CED	Birth	Wean	Year	Milk	Scrotal
+2	+2.4	+69	+120	+23	+1.47
Marb		RE		Fat	
-0.11		+0.09		+0.033	
\$ Wean	\$ Feedlot	\$ Grid	\$ Beef	ANGUSGS	
+56	+85	+8	+94	Powered by Meggen GeneCook	

**12****VDAR DEPUTY 5953**

5953 +20817585 04/01/23

V D A R CEDAR WIND 5126

**VDAR DEPUTY 7290**

V D A R POLLY 9697

GINGER HILL TREASURE 233

**VDAR LASS 6499#**

V D A R LASS 4100

EPDs	Dam	Sire
Birth	-1.9	+2.2
Wean	+57	+79
Year	+95	+120
Milk	+26	+28

CED	Birth	Wean	Year	Milk	Scrotal
+15	-1.5	+57	+97	+22	+1.92
Marb		RE		Fat	
0		0		+0.004	
\$ Wean	\$ Feedlot	\$ Grid	\$ Beef	ANGUSGS	
+58	+49	+15	+64	Powered by Meggen GeneCook	

**10****VDAR FA MANHATTAN 6143**

6143 +20718288 04/02/23

W R A MIRROR IMAGE T10#

**VDAR MANHATTAN 1379**

V D A R LASS 4113#

V D A R STOUT 1623

**VDAR PF LINDA 6440#**

V D A R PF LINDA 9710

EPDs	Dam	Sire
Birth	+3.5	-0.2
Wean	+60	+53
Year	+109	+84
Milk	+21	+32

CED	Birth	Wean	Year	Milk	Scrotal
+12	-0.7	+62	+103	+32	+1.98
Marb		RE		Fat	
+0.36		-0.14		+0.014	
\$ Wean	\$ Feedlot	\$ Grid	\$ Beef	ANGUSGS	
+73	+55	+30	+85	Powered by Meggen GeneCook	

**VDAR-Lass-6449**

Dam of Lots 11 and 12

**VDAR Lass 6499** was one of the featured cows in our cow sale, selling to Stock Ranch where she now serves as a donor. She was held open and flushed after posting her first 3 calves with a 362 day calving interval and ratios of 105 @ birth, 110 @ weaning, and 104 @ yearling. Her mother, VDAR Lass 4100, is a donor who has done very well for us. She had a 359 day calving interval before entering the donor program. 4100 has a record of 100 @ birth, 104 @ weaning, and 105 @ yearling. Her granddam was here until 10 years old and did a tremendous job for us. Her great-granddam was in production until 17 years old as a donor for Ginger Hill Angus in Virginia.

**VDAR-PF-Linda-6440**

Dam of Lots 8, 9, 10

**VDAR PF Linda 6440** was a Pathfinder and featured donor in the Heart of the Herd Cow Sale. In our herd, she recorded 4 calves with a 362 day calving interval. Her dam is still around and is 16 years old. She has a calving interval of 367 days on 14 head.

**13** **VDAR PATRIARCH 4863**  
 4863 +20837953 04/05/23  
 S S NIAGARA Z29#  
**TEHAMA PATRIARCH F028**  
 TEHAMA ELITE BLACKBIRD D826  
 V D A R HERO 6337  
**V D A R POLLY 9697**  
 V D A R POLLY 7662

EPDs	Dam	Sire
Birth	+3.1	-1.9
Wean	+52	+66
Year	+80	+130
Milk	+31	+30

CED	Birth	Wean	Year	Milk	Scrotal
+10	+1.0	+69	+117	+32	+1.85
Marb		RE		Fat	
+.53		+.14		+.059	
\$ Wean	\$ Feedlot	\$ Grid	\$ Beef		
+74	+95	+38	+133		

ANGUSGS  
Powered by Neogen GenCo

**15** **VDAR GALLATIN 4823**  
 4823 +20829422 04/02/23  
 V D A R SONNY BOY 1194  
**VDAR GALLATIN 7586**  
 V D A R LASS 2525  
 COLE CREEK BLACK CEDAR 46P#  
**V D A R MISS WIX 0336**  
 V D A R MISS WIX 8617

EPDs	Dam	Sire
Birth	+2.4	+1.8
Wean	+60	+56
Year	+105	+108
Milk	+36	+30

CED	Birth	Wean	Year	Milk	Scrotal
+3	+2.8	+66	+113	+35	+92
Marb		RE		Fat	
-.22		+.20		-.025	
\$ Wean	\$ Feedlot	\$ Grid	\$ Beef		
+66	+61	+9	+70		

ANGUSGS  
Powered by Neogen GenCo

**14** **VDAR PATRIARCH 4873**  
 4873 +20837954 04/05/23  
 S S NIAGARA Z29#  
**TEHAMA PATRIARCH F028**  
 TEHAMA ELITE BLACKBIRD D826  
 V D A R HERO 6337  
**V D A R POLLY 9697**  
 V D A R POLLY 7662

EPDs	Dam	Sire
Birth	+3.1	-1.9
Wean	+52	+66
Year	+80	+130
Milk	+31	+30

CED	Birth	Wean	Year	Milk	Scrotal
+2	+3.5	+80	+143	+30	+2.32
Marb		RE		Fat	
+.51		+.44		+.050	
\$ Wean	\$ Feedlot	\$ Grid	\$ Beef		
+70	+109	+41	+150		

ANGUSGS  
Powered by Neogen GenCo

**16** **VDAR GALLATIN 4853**  
 4853 +20829423 04/05/23  
 V D A R SONNY BOY 1194  
**VDAR GALLATIN 7586**  
 V D A R LASS 2525  
 COLE CREEK BLACK CEDAR 46P#  
**V D A R MISS WIX 0336**  
 V D A R MISS WIX 8617

EPDs	Dam	Sire
Birth	+2.4	+1.8
Wean	+60	+56
Year	+105	+108
Milk	+36	+30

CED	Birth	Wean	Year	Milk	Scrotal
+11	-0.6	+55	+95	+36	+79
Marb		RE		Fat	
+.27		-.02		+.034	
\$ Wean	\$ Feedlot	\$ Grid	\$ Beef		
+68	+51	+25	+77		

ANGUSGS  
Powered by Neogen GenCo

**V-D-A-R-Polly-9697**



Dam of Lots 13 and 14 plus granddam of many others!  
**VDAR Polly 9697**, a Hero bred cow, was a tremendous producer in the VDAR program for 13 years before she went on to finish her career at Browns Angus, Center, North Dakota. Her influence runs deep in the VDAR program.



**17** **VDAR GALLATIN 4883**  
 4883 +20829424 04/07/23  
 V D A R SONNY BOY 1194  
**VDAR GALLATIN 7586**  
 V D A R LASS 2525  
 COLE CREEK BLACK CEDAR 46P#  
**V D A R MISS WIX 0336**  
 V D A R MISS WIX 8617

EPDs	Dam	Sire
Birth	+2.4	+1.8
Wean	+60	+56
Year	+105	+108
Milk	+36	+30

CED	Birth	Wean	Year	Milk	Scrotal
+10	+0.5	+54	+95	+35	+1.02
Marb		RE		Fat	
+.20		+.17		-.003	
\$ Wean	\$ Feedlot	\$ Grid	\$ Beef		
+64	+62	+27	+89		

ANGUSGS  
Powered by Neogen GenCo

**18** **VDAR GALLATIN 4913**  
 4913 +20829425 04/10/23  
 V D A R SONNY BOY 1194  
**VDAR GALLATIN 7586**  
 V D A R LASS 2525  
 COLE CREEK BLACK CEDAR 46P#  
**V D A R MISS WIX 0336**  
 V D A R MISS WIX 8617

EPDs	Dam	Sire
Birth	+2.4	+1.8
Wean	+60	+56
Year	+105	+108
Milk	+36	+30

CED	Birth	Wean	Year	Milk	Scrotal
+8	+1.8	+56	+107	+44	+68
Marb		RE		Fat	
+.37		+.68		0	
\$ Wean	\$ Feedlot	\$ Grid	\$ Beef		
+65	+97	+41	+138		

ANGUSGS  
Powered by Neogen GenCo



**19** **VDAR EXT 6106 4803**  
 4803 +20832480 03/31/23  
 N BAR EMULATION EXT#  
**WULFFS EXT 6106#**  
 WULFFS ERICA DIANNA C116  
 COLE CREEK BLACK CEDAR 46P#  
**V D A R MISS WIX 0336**  
 V D A R MISS WIX 8617

EPDs	Dam	Sire
Birth	+2.4	-0.7
Wean	+60	+45
Year	+105	+80
Milk	+36	+26

CED	Birth	Wean	Year	Milk	Scrotal
+11	-0.7	+56	+96	+31	+82
Marb		RE		Fat	
+0.09		+0.44		-0.004	
\$ Wean	\$ Feedlot	\$ Grid	\$ Beef		
+63	+87	+25	+111		

ANGUSGS  
Powered by Neogen GenCo

**23** **VDAR EXT 6106 4903**  
 4903 +20835560 04/09/23  
 N BAR EMULATION EXT#  
**WULFFS EXT 6106#**  
 WULFFS ERICA DIANNA C116  
 COLE CREEK BLACK CEDAR 46P#  
**V D A R MISS WIX 0336**  
 V D A R MISS WIX 8617

EPDs	Dam	Sire
Birth	+2.4	-0.7
Wean	+60	+45
Year	+105	+80
Milk	+36	+26

CED	Birth	Wean	Year	Milk	Scrotal
+2	+1.3	+55	+99	+29	+11
Marb		RE		Fat	
+0.37		+0.34		+0.011	
\$ Wean	\$ Feedlot	\$ Grid	\$ Beef		
+55	+91	+36	+127		

ANGUSGS  
Powered by Neogen GenCo

**20** **VDAR EXT 6106 4813**  
 4813 +20832482 04/01/23  
 N BAR EMULATION EXT#  
**WULFFS EXT 6106#**  
 WULFFS ERICA DIANNA C116  
 COLE CREEK BLACK CEDAR 46P#  
**V D A R MISS WIX 0336**  
 V D A R MISS WIX 8617

EPDs	Dam	Sire
Birth	+2.4	-0.7
Wean	+60	+45
Year	+105	+80
Milk	+36	+26

CED	Birth	Wean	Year	Milk	Scrotal
+7	-0.1	+50	+88	+27	+41
Marb		RE		Fat	
+0.17		+0.37		-0.009	
\$ Wean	\$ Feedlot	\$ Grid	\$ Beef		
+54	+99	+28	+127		

ANGUSGS  
Powered by Neogen GenCo

**24** **VDAR EXT 6106 4923**  
 4923 +20835575 04/07/23  
 N BAR EMULATION EXT#  
**WULFFS EXT 6106#**  
 WULFFS ERICA DIANNA C116  
 COLE CREEK BLACK CEDAR 46P#  
**V D A R MISS WIX 0336**  
 V D A R MISS WIX 8617

EPDs	Dam	Sire
Birth	+2.4	-0.7
Wean	+60	+45
Year	+105	+80
Milk	+36	+26

CED	Birth	Wean	Year	Milk	Scrotal
+7	+1.0	+53	+93	+31	+95
Marb		RE		Fat	
+0.06		+0.27		-0.006	
\$ Wean	\$ Feedlot	\$ Grid	\$ Beef		
+59	+90	+22	+112		

ANGUSGS  
Powered by Neogen GenCo

**21** **VDAR EXT 6106 4833**  
 4833 +20832483 04/02/23  
 N BAR EMULATION EXT#  
**WULFFS EXT 6106#**  
 WULFFS ERICA DIANNA C116  
 COLE CREEK BLACK CEDAR 46P#  
**V D A R MISS WIX 0336**  
 V D A R MISS WIX 8617

EPDs	Dam	Sire
Birth	+2.4	-0.7
Wean	+60	+45
Year	+105	+80
Milk	+36	+26

CED	Birth	Wean	Year	Milk	Scrotal
+6	+0.7	+52	+88	+30	+1.28
Marb		RE		Fat	
-0.17		+0.16		-0.008	
\$ Wean	\$ Feedlot	\$ Grid	\$ Beef		
+61	+68	+9	+77		

ANGUSGS  
Powered by Neogen GenCo



**VDAR-MAGA-7050**  
 VDAR MAGA 7050 was the high-selling bull at our 2021 bull sale.  
 His dam, **VDAR Miss Wix 0336**, has a nursing ratio of 103 on eleven calves and yearling ratio of 104 on ten calves.  
 She was highly productive and became a donor in 2021.  
 She is the dam of lots 15 - 24.

**22** **VDAR EXT 6106 4893**  
 4893 +20832484 04/07/23  
 N BAR EMULATION EXT#  
**WULFFS EXT 6106#**  
 WULFFS ERICA DIANNA C116  
 COLE CREEK BLACK CEDAR 46P#  
**V D A R MISS WIX 0336**  
 V D A R MISS WIX 8617

EPDs	Dam	Sire
Birth	+2.4	-0.7
Wean	+60	+45
Year	+105	+80
Milk	+36	+26

CED	Birth	Wean	Year	Milk	Scrotal
+4	+0.7	+45	+84	+41	+65
Marb		RE		Fat	
+0.08		+0.28		+0.012	
\$ Wean	\$ Feedlot	\$ Grid	\$ Beef		
+57	+91	+21	+112		

ANGUSGS  
Powered by Neogen GenCo



# 25 VDAR F A SECURITY 3014

3014 +20960799 10/20/23

VDAR GREAT PLAINS 4008

**VDAR SECURITY 6701**  
VDAR LUCY 9056

V D A R HERO 5899

**V D A R LASS 2579#**  
V D A R LASS 0466

EPDs	Dam	Sire
Birth	+1.0	+1.4
Wean	+37	+62
Year	+55	+131
Milk	+38	+34

Birth Wt		205 Wt			365 wt	
84					1496	
CED	Birth	Wean	Year	Milk	Scrotal	
+2	+2.1	+53	+102	+41	+1.35	
Marb		RE		Fat		
+.51		+.52		-.033		
\$ Wean	\$ Feedlot	\$ Grid	\$ Beef			
+56	+85	+48	+133			



# 26 VDAR F A SECURITY 3004

3004 +20960798 10/21/23

VDAR GREAT PLAINS 4008

**VDAR SECURITY 6701**  
VDAR LUCY 9056

V D A R HERO 5899

**V D A R LASS 2579#**  
V D A R LASS 0466

EPDs	Dam	Sire
Birth	+1.0	+1.4
Wean	+37	+62
Year	+55	+131
Milk	+38	+34

Birth Wt		205 Wt			365 wt	
86					1456	
CED	Birth	Wean	Year	Milk	Scrotal	
+3	+0.7	+54	+101	+45	+2.03	
Marb		RE		Fat		
+.67		+.45		-.035		
\$ Wean	\$ Feedlot	\$ Grid	\$ Beef			
+64	+85	+55	+140			



# 27 VDAR SHADOW 2004

2004 +20991809 10/19/23

N BAR EMULATION EXT#

**N BAR SHADOW X4124**  
N BAR ENCHANTRESS 4908#

V D A R CEDAR WIND 8111#

**V D A R LASS 4100**  
V D A R LASS 2500

EPDs	Dam	Sire
Birth	-0.6	-0.7
Wean	+60	+31
Year	+105	+46
Milk	+32	+18

Birth Wt		205 Wt			365 wt	
81					1401	
CED	Birth	Wean	Year	Milk	Scrotal	
+9	-2.1	+49	+78	+27	-1.14	
Marb		RE		Fat		
-.23		+.44		+.015		
\$ Wean	\$ Feedlot	\$ Grid	\$ Beef			
+52	+65	+8	+73			



## V-D-A-R-Lass-2579



Dam of VDAR Twenty Twenty and Lots 25, 26, 38, 116

**VDAR Lass 2579** was an exceptional cow for us.

She's made the Pathfinder Report many times over the years. Boasting a 369 day calving interval on 11 head and a 106 weaning ratio. Her influence in our herd has been great, with her son, VDAR Twenty Twenty 2020, seeing heavy use for the last 4 years.

Her dam is still in production at 15, with a 363 day calving interval on 13 head and a 101 weaning ratio. Her granddam was in production here until 12 years old.



David Lusk  
of Arbon, ID



Don Switzer  
of Richey, MT  
with Andy Rest





**29**

**VDAR DEPUTY 2264**

2264 +20961646 01/14/24

V D A R CEDAR WIND 5126  
**VDAR DEPUTY 7290**  
 V D A R POLLY 9697  
 V D A R STOUT 1623  
**V D A R ELLUNA 5848**  
 V D A R ELLUNA 1416

EPDs	Dam	Sire
Birth	+2.4	+2.2
Wean	+44	+79
Year	+73	+120
Milk	+19	+28

Birth Wt		205 Wt		365 wt	
88		661		1061	
CED	Birth	Wean	Year	Milk	Scrotal
+6	+2.3	+62	+97	+24	+1.35
Marb		RE		Fat	
+.16		+.14		+.021	
\$ Wean	\$ Feedlot	\$ Grid	\$ Beef		
+62	+68	+23	+90		

**28**

**VDAR SONNY BOY 2324**

2324 +20960759 01/18/24

V D A R HERO 7072  
**V D A R SONNY BOY 1194**  
 V D A R LASS 2582  
 DFA HERO 6017#  
**VDAR ROSETTA 6426#**  
 V D A R ROSETTA 3762#

EPDs	Dam	Sire
Birth	+2.5	+2.6
Wean	+62	+58
Year	+101	+109
Milk	+32	+29

Birth Wt		205 Wt		365 wt	
77		665		1119	
CED	Birth	Wean	Year	Milk	Scrotal
+9	+1.1	+60	+108	+30	+1.16
Marb		RE		Fat	
+.52		+.52		-.048	
\$ Wean	\$ Feedlot	\$ Grid	\$ Beef		
+61	+100	+49	+149		



**V-D-A-R-Elluna-5848**



Dam of Lot 29, Granddam of Lots 52 and 153,  
 Maternal Sister to Lots 67 and 68  
**VDAR Elluna 5848** was the lead off cow for our Heart of the  
 Herd Cow Sale in 2022, selling for \$25,000 to Lucht Angus.  
 Her mother records 12 at 366 days and calved in again  
 first cycle this year at 14 years old. Tremendous longevity  
 runs in this cow family with her granddam staying in  
 our herd until 11 and her great-granddam living to be 17.





**Reference Sire**

**B BAR BLACK MASS 3045**

18137165 02/09/15

CROOK MT REALLY WINDY 141#

**B BAR WINDY 79**

B BAR LADY JEWEL 116#

SITZ RLS ALLIANCE 7164

**B BAR QUEEN 304#**

B BAR QUEEN 557#

CED	Birth	Wean	Year	Milk	Scrotal
+11	-1.6	+48	+83	+25	+1.33
	Marb		RE		Fat
	+0.21		+0.99		+0.017
\$ Wean	\$ Feedlot	\$ Grid	\$ Beef		
+52	+95	+36	+130		

*Black Mass is an exciting outcross opportunity for our herd. He is a 10-year-old bull who is still around, with perfect feet. His calves in our herd have tremendous hip, growth and muscle with outstanding attitudes. In the Lund's herd and a couple others, over 50 daughters have a nursing ratio of 102. Steve Lund, the breeder of Black Mass says, "He is a rancher's bull. Old time proven genetics. Adequate true growth competes right alongside the high EPD bulls we use without the surprises." We are excited for Black Mass's future here.*



**30**

**VDAR BLACK MASS 2054**

2054 20963109 01/05/24

B BAR WINDY 79

**B BAR BLACK MASS 3045#**

B BAR QUEEN 304#

VDAR GALLATIN 7586

**VDAR ELLUNA 0229**

VDAR ELLUNA 6487

EPDs	Dam	Sire
Birth	+2.5	-1.6
Wean	+61	+48
Year	+109	+83
Milk	+32	+25

Birth Wt	205 Wt	365 wt			
89	732	1170			
CED	Birth	Wean	Year	Milk	Scrotal
+9	+0.2	+51	+85	+24	+1.42
	Marb		RE		Fat
	+0.16		+0.14		+0.032
\$ Wean	\$ Feedlot	\$ Grid	\$ Beef		
+53	+47	+22	+69		



**31**

**VDAR BLACK MASS 2214**

2214 20963132 01/13/24

B BAR WINDY 79

**B BAR BLACK MASS 3045#**

B BAR QUEEN 304#

V D A R SONNY BOY 1194

**VDAR LASS 9053#**

V D A R LASS 1448

EPDs	Dam	Sire
Birth	+2.3	-1.6
Wean	+56	+48
Year	+100	+83
Milk	+25	+25

Birth Wt	205 Wt	365 wt			
87	721	1171			
CED	Birth	Wean	Year	Milk	Scrotal
+6	+1.3	+64	+110	+31	+0.62
	Marb		RE		Fat
	+0.21		+0.87		+0.061
\$ Wean	\$ Feedlot	\$ Grid	\$ Beef		
+69	+93	+31	+124		





**32** **VDAR BLACK MASS 2204**  
 2204 20963096 01/12/24

B BAR WINDY 79  
**B BAR BLACK MASS 3045#**  
 B BAR QUEEN 304#  
 VDAR TWENTY TWENTY 2020  
**VDAR ROSETTA 2306**  
 VDAR ROSETTA 9060

EPDs	Dam	Sire
Birth	+1.3	-1.6
Wean	+69	+48
Year	+111	+83
Milk	+21	+25

Birth Wt		205 Wt		365 wt	
81		742		1201	
CED	Birth	Wean	Year	Milk	Scrotal
+4	+1.5	+69	+115	+21	+1.13
Marb		RE		Fat	
+.08		+1.00		-.014	
\$ Wean	\$ Feedlot	\$ Grid	\$ Beef		
+59	+99	+32	+131	<b>ANGUS</b> <small>Powered by Neogen Genesink</small>	



**34** **VDAR BLACK MASS 1614**  
 1614 20937944 01/17/24

B BAR WINDY 79  
**B BAR BLACK MASS 3045#**  
 B BAR QUEEN 304#  
 V D A R CEDAR WIND 5126  
**VDAR POLLY 9204**  
 V D A R POLLY 7929#

EPDs	Dam	Sire
Birth	-2.9	-1.6
Wean	+46	+48
Year	+68	+83
Milk	+32	+25

Birth Wt		205 Wt		365 wt	
82		727		1133	
CED	Birth	Wean	Year	Milk	Scrotal
+12	-1.6	+54	+86	+32	+1.41
Marb		RE		Fat	
+.15		+.19		-.002	
\$ Wean	\$ Feedlot	\$ Grid	\$ Beef		
+68	+53	+25	+78	<b>ANGUS</b> <small>Powered by Neogen Genesink</small>	

**33** **VDAR BLACK MASS 2094**  
 2094 20963102 01/08/24

B BAR WINDY 79  
**B BAR BLACK MASS 3045#**  
 B BAR QUEEN 304#  
 VDAR GALLATIN 7586  
**VDAR LASS 1509**  
 V D A R LASS 5828#

EPDs	Dam	Sire
Birth	+3.5	-1.6
Wean	+77	+48
Year	+132	+83
Milk	+36	+25

Birth Wt		205 Wt		365 wt	
78		734		1152	
CED	Birth	Wean	Year	Milk	Scrotal
+3	+0.7	+59	+94	+37	+2.25
Marb		RE		Fat	
+.06		+.27		+.049	
\$ Wean	\$ Feedlot	\$ Grid	\$ Beef		
+71	+73	+18	+91	<b>ANGUS</b> <small>Powered by Neogen Genesink</small>	



**35** **VDAR BLACK MASS 1204**  
 1204 20900030 01/20/24

B BAR WINDY 79  
**B BAR BLACK MASS 3045#**  
 B BAR QUEEN 304#  
 V D A R SONNY BOY 1194  
**V D A R LUCY 8345**  
 V D A R LUCY 6629

EPDs	Dam	Sire
Birth	+0.7	-1.6
Wean	+52	+48
Year	+93	+83
Milk	+25	+25

Birth Wt		205 Wt		365 wt	
88		680		1133	
CED	Birth	Wean	Year	Milk	Scrotal
+7	+1.0	+61	+104	+21	+1.01
Marb		RE		Fat	
+.22		+.84		-.022	
\$ Wean	\$ Feedlot	\$ Grid	\$ Beef		
+53	+88	+37	+125	<b>ANGUS</b> <small>Powered by Neogen Genesink</small>	





**36**

**VDAR BLACK MASS 2194**

2194 20963110 01/12/24

B BAR WINDY 79

**B BAR BLACK MASS 3045#**

B BAR QUEEN 304#

V D A R SONNY BOY 1194

**VDAR LASS 1541**

VDAR LASS 8183

EPDs	Dam	Sire
Birth	+4.3	-1.6
Wean	+63	+48
Year	+111	+83
Milk	+35	+25

Birth Wt		205 Wt		365 wt	
88		703		1141	
CED	Birth	Wean	Year	Milk	Scrotal
+6	+1.3	+64	+112	+37	+60
Marb		RE		Fat	
+.37		+.53		+.017	
\$ Wean	\$ Feedlot	\$ Grid	\$ Beef		
+71	+89	+38	+127		



**37**

**VDAR FA BLACK MASS 3034**

3034 20963137 01/07/24

B BAR WINDY 79

**B BAR BLACK MASS 3045#**

B BAR QUEEN 304#

W R A MIRROR IMAGE T10#

**VDAR PF LASS 7076**

V D A R PF LASS 3110#

EPDs	Dam	Sire
Birth	+0.1	-1.6
Wean	+46	+48
Year	+74	+83
Milk	+39	+25

Birth Wt		205 Wt		365 wt	
82		662		1091	
CED	Birth	Wean	Year	Milk	Scrotal
+10	-0.9	+47	+77	+38	+29
Marb		RE		Fat	
+.22		+.37		+.010	
\$ Wean	\$ Feedlot	\$ Grid	\$ Beef		
+64	+55	+29	+84		



**38**

**VDAR BLACK MASS 2744**

2744 +20963150 02/06/24

B BAR WINDY 79

**B BAR BLACK MASS 3045#**

B BAR QUEEN 304#

V D A R HERO 5899

**V D A R LASS 2579#**

V D A R LASS 0466

EPDs	Dam	Sire
Birth	+1.0	-1.6
Wean	+37	+48
Year	+55	+83
Milk	+38	+25

Birth Wt		205 Wt		365 wt	
87		694		1137	
CED	Birth	Wean	Year	Milk	Scrotal
+3	+1.5	+50	+72	+31	+1.45
Marb		RE		Fat	
+.02		+.64		+.008	
\$ Wean	\$ Feedlot	\$ Grid	\$ Beef		
+61	+60	+23	+83		



VDAR



**Reference  
Sire**

**U-2 COALITION 206C**

18626847 # 01/23/15

CONNEALY CONSENSUS 7229#

HF SYNDICATE 213Z

HF MISS BLACKCAP 27R

YOUNG DALE XCLUSIVE 25X

U2 ERELITE 109Z

U-2 ERELITE 1X

CED	Birth	Wean	Year	Milk	Scrotal
+11	+1.1	+56	+111	+27	+.90
Marb		RE		Fat	
+.39		+.48		-.004	
\$ Wean	\$ Feedlot		\$ Grid	\$ Beef	
+57	+95		+40	+135	

We used **U-2 Coalition 206C** for his ability to sire extremely docile cattle that have exceptional structural soundness and foot quality. His calves have modest birth weights and moderate growth. 206C is an outcross bull for VDAR and we are excited to use some of his sons in this year's calf crop.



**39**

**VDAR COALITION 1114**

1114 +20900024 01/15/24

HF SYNDICATE 213Z

U-2 COALITION 206C#

U2 ERELITE 109Z

KOUPAL JUNEAU 797#

VDAR BEAUTY 4321#

VDAR BEAUTY 0355

EPDs	Dam	Sire
Birth	+0.7	+1.1
Wean	+72	+56
Year	+123	+111
Milk	+30	+27

Birth Wt	205 Wt		365 Wt		
76	674		1229		
CED	Birth	Wean	Year	Milk	Scrotal
+11	+0.4	+69	+124	+29	+1.65
Marb		RE		Fat	
+.15		+.39		+.077	
\$ Wean	\$ Feedlot		\$ Grid	\$ Beef	
+71	+78		+21	+100	

**40**

**VDAR COALITION 1154**

1154 20900028 01/18/24

HF SYNDICATE 213Z

U-2 COALITION 206C#

U2 ERELITE 109Z

VDAR CEDAR WIND 5126

VDAR BEAUTY 9205

VDAR BEAUTY 7919

EPDs	Dam	Sire
Birth	+1.2	+1.1
Wean	+59	+56
Year	+104	+111
Milk	+29	+27

Birth Wt	205 Wt		365 Wt		
78	673		1235		
CED	Birth	Wean	Year	Milk	Scrotal
+9	+1.5	+64	+120	+27	+.74
Marb		RE		Fat	
+.44		+.12		+.054	
\$ Wean	\$ Feedlot		\$ Grid	\$ Beef	
+60	+107		+34	+140	





## 43 VDAR COALITION 1374

1374      20907155      01/30/24

HF SYNDICATE 213Z  
**U-2 COALITION 206C#**  
 U2 ERELITE 109Z  
 V D A R CEDAR WIND 8111#  
**V D A R BEAUTY 7965**  
 V D A R BEAUTY 4321#

EPDs		Dam	Sire
Birth	-0.3	+1.1	
Wean	+54	+56	
Year	+91	+111	
Milk	+39	+27	

Birth Wt	205 Wt	365 wt
82	781	1194

CED	Birth	Wean	Year	Milk	Scrotal
+17	-1.2	+54	+94	+33	+.59

Marb	RE	Fat
+.45	-.04	+.064

\$ Wean	\$ Feedlot	\$ Grid	\$ Beef
+64	+50	+31	+82

**ANGUSGS**  
Powered by Neogen GenScan

## 41 VDAR COALITION 1254

1254      20907145      01/23/24

HF SYNDICATE 213Z  
**U-2 COALITION 206C#**  
 U2 ERELITE 109Z  
 VDAR LONE PEAK 2157  
**VDAR ELLUNA 9240**  
 V D A R ELLUNA 5378#

EPDs		Dam	Sire
Birth	+1.6	+1.1	
Wean	+59	+56	
Year	+115	+111	
Milk	+30	+27	

Birth Wt	205 Wt	365 wt
94	786	1226

CED	Birth	Wean	Year	Milk	Scrotal
+11	+1.3	+70	+131	+29	+.78

Marb	RE	Fat
+.50	+.45	-.018

\$ Wean	\$ Feedlot	\$ Grid	\$ Beef
+64	+97	+46	+143

**ANGUSGS**  
Powered by Neogen GenScan

## V-D-A-R-Beauty-7965

Dam of Lot 43



## 44 OUT OF SALE

## 42 VDAR COALITION 2334

2334      20962032      01/18/24

HF SYNDICATE 213Z  
**U-2 COALITION 206C#**  
 U2 ERELITE 109Z  
 VDAR SHOWDOWN 7236  
**VDAR ELLUNA 0273**  
 V D A R ELLUNA 3129

EPDs		Dam	Sire
Birth	+0.2	+1.1	
Wean	+55	+56	
Year	+91	+111	
Milk	+25	+27	

Birth Wt	205 Wt	365 wt
94	691	1179

CED	Birth	Wean	Year	Milk	Scrotal
+10	+2.1	+59	+107	+26	+.35

Marb	RE	Fat
+.19	+.33	+.009

\$ Wean	\$ Feedlot	\$ Grid	\$ Beef
+51	+87	+27	+115

**ANGUSGS**  
Powered by Neogen GenScan

## 45 VDAR FA COALITION 3044

3044      20962037      01/09/24

HF SYNDICATE 213Z  
**U-2 COALITION 206C#**  
 U2 ERELITE 109Z  
 V D A R CEDAR WIND 8111#  
**VDAR NF LINDA 8124**  
 VDAR NF LINDA 6457

EPDs		Dam	Sire
Birth	+0.6	+1.1	
Wean	+59	+56	
Year	+97	+111	
Milk	+24	+27	

Birth Wt	205 Wt	365 wt
74	713	1171

CED	Birth	Wean	Year	Milk	Scrotal
+12	+1.3	+66	+118	+30	+1.03

Marb	RE	Fat
+.49	+.39	+.008

\$ Wean	\$ Feedlot	\$ Grid	\$ Beef
+66	+88	+42	+130

**ANGUSGS**  
Powered by Neogen GenScan





**46** **VDAR COALITION 1024**  
 1024 20908127 01/09/24  
 HF SYNDICATE 213Z  
**U-2 COALITION 206C#**  
 U2 ERELITE 109Z  
 SITZ RESILIENT 10208  
**VDAR DUTCHESS 1140**  
 ROSENEATH BEAUTY 741

EPDs	Dam	Sire
Birth	+0.3	+1.1
Wean	+52	+56
Year	+91	+110
Milk	+23	+27

Birth Wt	205 Wt	365 wt
78	655	1132

CED	Birth	Wean	Year	Milk	Scrotal
+9	+0.7	+54	+101	+25	na

Marb	RE	Fat
+0.39	+0.41	+0.00

\$ Wean	\$ Feedlot	\$ Grid	\$ Beef
+46	+79	+38	+117

**50** **VDAR FA COALITION 3064**  
 3064 20961984 01/14/24  
 HF SYNDICATE 213Z  
**U-2 COALITION 206C#**  
 U2 ERELITE 109Z  
 VDAR GALLATIN 7586  
**VDAR FA HYALITE 1617**  
 VDAR PF HYALITE 8152

EPDs	Dam	Sire
Birth	+1.3	+1.1
Wean	+41	+56
Year	+82	+111
Milk	+39	+27

Birth Wt	205 Wt	365 wt
89	710	1124

CED	Birth	Wean	Year	Milk	Scrotal
+9	+2.6	+52	+98	+33	+0.52

Marb	RE	Fat
+0.43	+0.26	+0.07

\$ Wean	\$ Feedlot	\$ Grid	\$ Beef
+48	+83	+38	+121

ANGUSGS  
Powered by Neogen GenScan

**47** **VDAR COALITION 2414**  
 2414 20962011 01/21/24  
 HF SYNDICATE 213Z  
**U-2 COALITION 206C#**  
 U2 ERELITE 109Z  
 V D A R SONNY BOY 1194  
**VDAR LASS 1545**  
 VDAR LASS 7004

EPDs	Dam	Sire
Birth	+2.5	+1.1
Wean	+52	+56
Year	+86	+111
Milk	+34	+27

Birth Wt	205 Wt	365 wt
94	662	1145

CED	Birth	Wean	Year	Milk	Scrotal
+3	+3.7	+58	+104	+35	+0.57

Marb	RE	Fat
+0.14	+0.56	-0.33

\$ Wean	\$ Feedlot	\$ Grid	\$ Beef
+55	+73	+31	+104

ANGUSGS  
Powered by Neogen GenScan

**51** **VDAR COALITION 2464**  
 2464 20962033 01/23/24  
 HF SYNDICATE 213Z  
**U-2 COALITION 206C#**  
 U2 ERELITE 109Z  
 VDAR SHOWDOWN 7236  
**VDAR ANN 0271**  
 V D A R ANN 3127

EPDs	Dam	Sire
Birth	+2.6	+1.1
Wean	+61	+56
Year	+97	+111
Milk	+19	+27

Birth Wt	205 Wt	365 wt
88	620	1106

CED	Birth	Wean	Year	Milk	Scrotal
+9	-0.3	+63	+109	+30	+1.24

Marb	RE	Fat
+0.47	+0.40	+0.030

\$ Wean	\$ Feedlot	\$ Grid	\$ Beef
+68	+84	+40	+124

ANGUSGS  
Powered by Neogen GenScan

**48** **VDAR COALITION 2044**  
 2044 20961872 01/05/24  
 HF SYNDICATE 213Z  
**U-2 COALITION 206C#**  
 U2 ERELITE 109Z  
 KA CEDAR WIND 0520  
**VDAR ANN 2382**  
 VDAR ANN 0209

EPDs	Dam	Sire
Birth	+2.2	+1.1
Wean	+59	+56
Year	+103	+111
Milk	+21	+27

Birth Wt	205 Wt	365 wt
83	669	1138

CED	Birth	Wean	Year	Milk	Scrotal
-1	+4.2	+71	+130	+22	+1.10

Marb	RE	Fat
+0.32	+0.33	+0.024

\$ Wean	\$ Feedlot	\$ Grid	\$ Beef
+45	+92	+32	+125

ANGUSGS  
Powered by Neogen GenScan



**49** **VDAR COALITION 1184**  
 1184 +20907164 01/19/24  
 HF SYNDICATE 213Z  
**U-2 COALITION 206C#**  
 U2 ERELITE 109Z  
 KOUPAL JUNEAU 797#  
**V D A R BEAUTY 4321#**  
 V D A R BEAUTY 0355

EPDs	Dam	Sire
Birth	+0.7	+1.1
Wean	+72	+56
Year	+123	+111
Milk	+30	+27

Birth Wt	205 Wt	365 wt
89	643	1101

CED	Birth	Wean	Year	Milk	Scrotal
+9	+1.8	+59	+104	+23	+0.26

Marb	RE	Fat
+0.11	+0.76	-0.021

\$ Wean	\$ Feedlot	\$ Grid	\$ Beef
+55	+84	+31	+115

ANGUSGS  
Powered by Neogen GenScan

**52** **VDAR COALITION 2564**  
 2564 20961952 01/25/24  
 HF SYNDICATE 213Z  
**U-2 COALITION 206C#**  
 U2 ERELITE 109Z  
 VDAR GALLATIN 7586  
**VDAR ELLUNA 2344**  
 V D A R ELLUNA 5848

EPDs	Dam	Sire
Birth	+3.4	+1.1
Wean	+64	+56
Year	+102	+111
Milk	+31	+27

Birth Wt	205 Wt	365 wt
83	699	1165

CED	Birth	Wean	Year	Milk	Scrotal
+8	+2.0	+68	+118	+36	+1.52

Marb	RE	Fat
+0.11	-0.04	+0.040

\$ Wean	\$ Feedlot	\$ Grid	\$ Beef
+70	+68	+17	+84

ANGUSGS  
Powered by Neogen GenScan



**Reference  
Sire**

**VDAR KAWLIGA 2141**

20011331 01/09/21

VDAR CEDAR WIND 8111#

VDAR CEDAR WIND 5126

VDAR BEAUTY 4321#

DARS WALK ON 4 TRAVELER 584

VDAR RITA 5313

VDAR RITA 6644

CED	Birth	Wean	Year	Milk	Scrotal
+12	-2.5	+54	+97	+34	+.76
Marb		RE		Fat	
+.55		+.23		+.073	
\$ Wean		\$ Feedlot		\$ Grid	
+66		+85		+39	
				\$ Beef	
				+124	

*Kawliga was one of our top-selling bulls in our 2022 Cattleman's Advantage Bull Sale, purchased by CS Angus, Craig & Shelby Weirather, Newell, SD. We used him extensively and are extremely excited by the uniformity, productivity and temperament of his calves.*

**53**

**VDAR KAWLIGA 1104**

1104 20900023 01/15/24

VDAR CEDAR WIND 5126

VDAR KAWLIGA 2141

VDAR RITA 5313

VDAR BLACK TRAIN 2487

VDAR HAZEL 0780

VDAR HAZEL 4376

EPDs	Dam	Sire
Birth	+2.8	-2.5
Wean	+68	+54
Year	+125	+97
Milk	+39	+34

Birth Wt	205 Wt	365 wt			
78	777	1251			
CED	Birth	Wean	Year	Milk	Scrotal
+11	-0.7	+66	+125	+37	+.97
Marb		RE		Fat	
+.33		+.60		+.023	
\$ Wean		\$ Feedlot		\$ Grid	
+70		+110		+36	
				\$ Beef	
				+147	



**54**

**VDAR KAWLIGA 1134**

1134 20900026 01/17/24

VDAR CEDAR WIND 5126

VDAR KAWLIGA 2141

VDAR RITA 5313

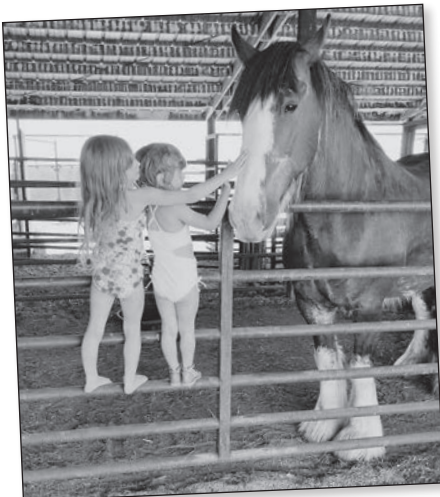
SITZ RESILIENT 10208

VDAR ELLUNA 1133

VDAR ELLUNA 7913

EPDs	Dam	Sire
Birth	+1.6	-2.5
Wean	+90	+54
Year	+148	+97
Milk	+19	+34

Birth Wt	205 Wt	365 wt			
82	726	1256			
CED	Birth	Wean	Year	Milk	Scrotal
+2	+1.6	+83	+138	+27	+.70
Marb		RE		Fat	
+.15		+.75		+.008	
\$ Wean		\$ Feedlot		\$ Grid	
+85		+99		+31	
				\$ Beef	
				+129	



**55** **VDAR KAWLIGA 1034**  
 1034 20900018 01/11/24  
 V D A R CEDAR WIND 5126  
**VDAR KAWLIGA 2141**  
 V D A R RITA 5313  
 VDAR GALLATIN 7586  
**VDAR BLACK BELLE 0721**  
 V D A R BLACK BELLE 8341

EPDs	Dam	Sire
Birth	-1.0	-2.5
Wean	+57	+54
Year	+107	+97
Milk	+34	+34

Birth Wt	205 Wt	365 Wt
71	704	1165

CED	Birth	Wean	Year	Milk	Scrotal
+12	-0.7	+58	+105	+27	+89

Marb	RE	Fat
+51	+19	+043

\$ Wean	\$ Feedlot	\$ Grid	\$ Beef
+58	+82	+39	+120

ANGUSGS  
Powered by Neogen GenScan

**58** **VDAR KAWLIGA 1444**  
 1444 20900049 02/04/24  
 V D A R CEDAR WIND 5126  
**VDAR KAWLIGA 2141**  
 V D A R RITA 5313  
 SITZ RESILIENT 10208  
**VDAR RITA 1106**  
 V D A R RITA 4317

EPDs	Dam	Sire
Birth	+1.0	-2.5
Wean	+62	+54
Year	+109	+97
Milk	+24	+34

Birth Wt	205 Wt	365 Wt
87	712	1205

CED	Birth	Wean	Year	Milk	Scrotal
+6	+0.2	+63	+109	+23	+1.06

Marb	RE	Fat
+59	+72	+038

\$ Wean	\$ Feedlot	\$ Grid	\$ Beef
+65	+86	+49	+135

ANGUSGS  
Powered by Neogen GenScan



**56** **VDAR KAWLIGA 1414**  
 1414 20900046 02/01/24  
 V D A R CEDAR WIND 5126  
**VDAR KAWLIGA 2141**  
 V D A R RITA 5313  
 ROSENEATH ADVANCE 427  
**V D A R POLLY 7963**  
 V D A R POLLY 5344

EPDs	Dam	Sire
Birth	+2.1	-2.5
Wean	+65	+54
Year	+119	+97
Milk	+34	+34

Birth Wt	205 Wt	365 Wt
86	750	1190

CED	Birth	Wean	Year	Milk	Scrotal
+4	+0.7	+67	+123	+40	+1.39

Marb	RE	Fat
+67	+34	+082

\$ Wean	\$ Feedlot	\$ Grid	\$ Beef
+75	+90	+45	+136

ANGUSGS  
Powered by Neogen GenScan

**59** **VDAR KAWLIGA 1124**  
 1124 20900025 01/16/24  
 V D A R CEDAR WIND 5126  
**VDAR KAWLIGA 2141**  
 V D A R RITA 5313  
 SITZ RESILIENT 10208  
**VDAR BEAUTY 1115**  
 V D A R BEAUTY 7965

EPDs	Dam	Sire
Birth	-0.4	-2.5
Wean	+68	+54
Year	+108	+97
Milk	+34	+34

Birth Wt	205 Wt	365 Wt
78	718	1137

CED	Birth	Wean	Year	Milk	Scrotal
+7	-0.4	+73	+119	+33	+1.02

Marb	RE	Fat
+51	+64	+038

\$ Wean	\$ Feedlot	\$ Grid	\$ Beef
+86	+83	+44	+127

ANGUSGS  
Powered by Neogen GenScan

**57** **VDAR KAWLIGA 1244**  
 1244 20900034 01/22/24  
 V D A R CEDAR WIND 5126  
**VDAR KAWLIGA 2141**  
 V D A R RITA 5313  
 VDAR GALLATIN 7586  
**VDAR POLLY 1141**  
 V D A R POLLY 8369

EPDs	Dam	Sire
Birth	+3.0	-2.5
Wean	+68	+54
Year	+124	+97
Milk	+33	+34

Birth Wt	205 Wt	365 Wt
92	681	1175

CED	Birth	Wean	Year	Milk	Scrotal
+6	+1.5	+67	+128	+33	+7.8

Marb	RE	Fat
+31	+45	+039

\$ Wean	\$ Feedlot	\$ Grid	\$ Beef
+70	+100	+32	+132

ANGUSGS  
Powered by Neogen GenScan

**60** **VDAR FA KAWLIGA 3084**  
 3084 20960803 01/28/24  
 V D A R CEDAR WIND 5126  
**VDAR KAWLIGA 2141**  
 V D A R RITA 5313  
 VDAR SONNY BOY 4688  
**VDAR FA HYALITE 2390**  
 V D A R PF HYALITE 5843

EPDs	Dam	Sire
Birth	-0.2	-2.5
Wean	+47	+54
Year	+85	+97
Milk	+40	+34

Birth Wt	205 Wt	365 Wt
79	697	1185

CED	Birth	Wean	Year	Milk	Scrotal
+8	-0.1	+52	+84	+40	+5.6

Marb	RE	Fat
+12	+23	-.005

\$ Wean	\$ Feedlot	\$ Grid	\$ Beef
+67	+63	+24	+87

ANGUSGS  
Powered by Neogen GenScan



# 61 **VDAR KAWLIGA 1424**

1424 20900047 02/01/24

V D A R CEDAR WIND 5126  
**VDAR KAWLIGA 2141**  
 V D A R RITA 5313  
 ROSENEATH ADVANCE 427  
**V D A R HAZEL 8360**  
 V D A R HAZEL 6379

EPDs	Dam	Sire
Birth	-0.1	-2.5
Wean	+47	+54
Year	+86	+97
Milk	+22	+34

Birth Wt		205 Wt		365 wt	
83		672		1133	
CED	Birth	Wean	Year	Milk	Scrotal
+6	+0.3	+56	+104	+35	+1.21
Marb		RE		Fat	
+.89		+.35		+.047	
\$ Wean	\$ Feedlot	\$ Grid	\$ Beef		
+63	+74	+58	+132		



# 63 **VDAR KAWLIGA 1194**

1194 20907165 01/20/24

V D A R CEDAR WIND 5126  
**VDAR KAWLIGA 2141**  
 V D A R RITA 5313  
 V D A R CEDAR WIND 8111#  
**V D A R FOREVER LADY 8301#**  
 V D A R FOREVER LADY 4381

EPDs	Dam	Sire
Birth	+0.2	-2.5
Wean	+57	+54
Year	+96	+97
Milk	+36	+34

Birth Wt		205 Wt		365 wt	
82		699		1094	
CED	Birth	Wean	Year	Milk	Scrotal
+7	-0.6	+55	+96	+40	+1.15
Marb		RE		Fat	
+.11		+.08		+.043	
\$ Wean	\$ Feedlot	\$ Grid	\$ Beef		
+71	+60	+18	+78		



# 62 **VDAR KAWLIGA 1344**

1344 20900041 01/28/24

V D A R CEDAR WIND 5126  
**VDAR KAWLIGA 2141**  
 V D A R RITA 5313  
 VDAR SHOWDOWN 7236  
**VDAR LASS 1123**  
 V D A R LASS 2641

EPDs	Dam	Sire
Birth	+0.4	-2.5
Wean	+64	+54
Year	+107	+97
Milk	+29	+34

Birth Wt		205 Wt		365 wt	
96		742		1153	
CED	Birth	Wean	Year	Milk	Scrotal
+6	+2.9	+67	+115	+25	+6.3
Marb		RE		Fat	
+.52		-.04		+.020	
\$ Wean	\$ Feedlot	\$ Grid	\$ Beef		
+60	+76	+38	+114		

# 64 **VDAR KAWLIGA 1094**

1094 20900022 01/14/24

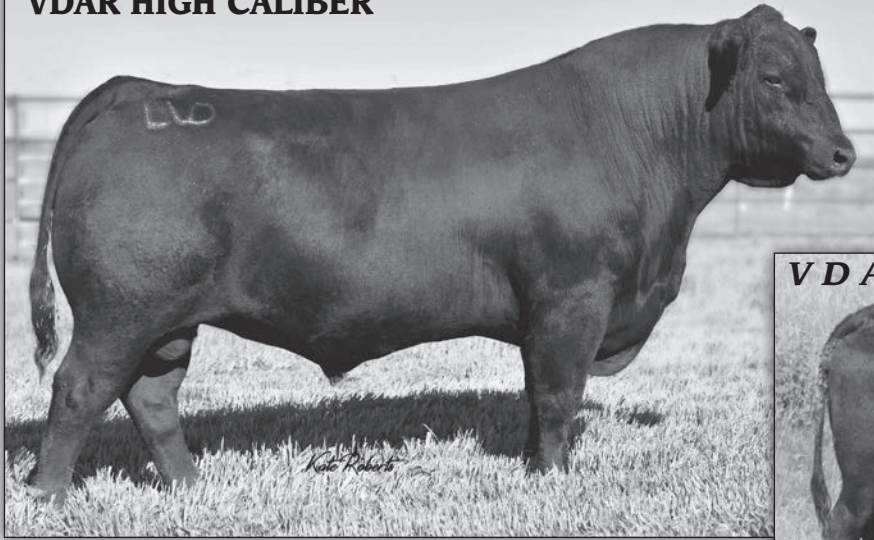
V D A R CEDAR WIND 5126  
**VDAR KAWLIGA 2141**  
 V D A R RITA 5313  
 V D A R HERO 7072  
**VDAR LASS 2423**  
 VDAR LUCY 0725

EPDs	Dam	Sire
Birth	-0.9	-2.5
Wean	+66	+54
Year	+112	+97
Milk	+13	+34

Birth Wt		205 Wt		365 wt	
55		660		1134	
CED	Birth	Wean	Year	Milk	Scrotal
+13	-2.7	+58	+102	+25	+8.8
Marb		RE		Fat	
+.55		+.27		+.040	
\$ Wean	\$ Feedlot	\$ Grid	\$ Beef		
+62	+86	+42	+127		



# VDAR HIGH CALIBER



Sire of VDAR Twenty Twenty 2020



**VDAR Lass 2579**

Dam of VDAR Twenty Twenty 2020 and Granddam of Lot 52

**Reference Sire** **VDAR TWENTY TWENTY 2020**  
 +19701567 01/02/20  
 KA BLACK CEDAR 080  
**VDAR HIGH CALIBER**  
 V D A R LASS 3133  
 V D A R HERO 5899  
**V D A R LASS 2579#**  
 V D A R LASS 0466

CED	Birth	Wean	Year	Milk	Scrotal
-1	+4.1	+58	+107	+29	+1.14
	Marb		RE	Fat	
	+0.35		+0.13	+0.050	
\$ Wean	\$ Feedlot	\$ Grid	\$ Beef		
+45	+91	+30	+121		

**Twenty Twenty** was kept as our pick of the 2020 calf crop. His first daughters have just calved and are great young cows. They have sweet attitudes and are attentive mothers. His calves have done very well, with an average ratio of 101 on weaning and 102 on yearling. His dam is a 12-year-old donor with perfect feet, a 106 nursing ratio and she has kept a 370 day calving interval while being flushed multiple times. His granddam is still here as well at 14 years old, with a 362 day calving interval and a nursing ratio of 101.

Co-owned with Tom Brockel, Bison, SD. Semen available



# 65 VDAR TWENTY TWENTY 2074

2074 20960754 01/08/24

VDAR HIGH CALIBER  
**VDAR TWENTY TWENTY 2020**  
 V D A R LASS 2579#

VDAR GALLATIN 7586  
**VDAR ELLUNA 0253**  
 VDAR ELLUNA 7058

EPDs	Dam	Sire
Birth	-0.4	+4.1
Wean	+51	+58
Year	+87	+107
Milk	+26	+29

Birth Wt	205 Wt	365 Wt		
77	684	1215		
CED	Birth	Wean	Year	Milk
+5	+2.8	+71	+122	+29
	Marb	RE	Fat	
	+0.44	+0.54	-0.001	
\$ Wean	\$ Feedlot	\$ Grid	\$ Beef	
+62	+90	+42	+132	

# 66 VDAR F A TWENTY TWENTY 3024

3024 20960800 01/03/24

VDAR HIGH CALIBER  
**VDAR TWENTY TWENTY 2020**  
 V D A R LASS 2579#

V D A R SONNY BOY 1194  
**VDAR FA LINDA 1618**  
 V D A R PF LINDA 9710

EPDs	Dam	Sire
Birth	+2.7	+4.1
Wean	+54	+58
Year	+97	+107
Milk	+19	+29

Birth Wt	205 Wt	365 Wt		
83	722	1176		
CED	Birth	Wean	Year	Milk
-2	+4.2	+62	+105	+23
	Marb	RE	Fat	
	+0.14	+0.14	+0.002	
\$ Wean	\$ Feedlot	\$ Grid	\$ Beef	
+40	+97	+23	+120	





## 67 VDAR TWENTY TWENTY 2524

2524 +20960769 01/24/24

VDAR HIGH CALIBER  
VDAR TWENTY TWENTY 2020  
V D A R LASS 2579#

HA WINDFALL 6011  
V D A R ELLUNA 1416  
V D A R ELLUNA 9720

EPDs	Dam	Sire
Birth	+0.5	+4.1
Wean	+36	+58
Year	+72	+107
Milk	+29	+29

Birth Wt		205 Wt		365 wt	
87		678		1161	
CED	Birth	Wean	Year	Milk	Scrotal
+3	+3.0	+44	+83	+27	+71
Marb		RE		Fat	
+.22		+.12		+.038	
\$ Wean	\$ Feedlot	\$ Grid	\$ Beef		
+38	+79	+24	+103	ANGUSGS Powered by Neogen GenCoast	

## 68 VDAR TWENTY TWENTY 2284

2284 +20960758 01/17/24

VDAR HIGH CALIBER  
VDAR TWENTY TWENTY 2020  
V D A R LASS 2579#

HA WINDFALL 6011  
V D A R ELLUNA 1416  
V D A R ELLUNA 9720

EPDs	Dam	Sire
Birth	+0.5	+4.1
Wean	+36	+58
Year	+72	+107
Milk	+29	+29

Birth Wt		205 Wt		365 wt	
82		604		1078	
CED	Birth	Wean	Year	Milk	Scrotal
+4	+2.0	+44	+87	+29	+69
Marb		RE		Fat	
+.25		+.08		+.036	
\$ Wean	\$ Feedlot	\$ Grid	\$ Beef		
+38	+83	+25	+108	ANGUSGS Powered by Neogen GenCoast	

## 69 VDAR FA TWENTY TWENTY 3094

3094 20960804 02/01/24

VDAR HIGH CALIBER  
VDAR TWENTY TWENTY 2020  
V D A R LASS 2579#

V D A R BLACK CEDAR 2114  
VDAR FA HYALITE 9042  
V D A R PF HYALITE 5843

EPDs	Dam	Sire
Birth	+0.6	+4.1
Wean	+40	+58
Year	+73	+107
Milk	+25	+29

Birth Wt		205 Wt		365 wt	
93		640		1086	
CED	Birth	Wean	Year	Milk	Scrotal
+6	+0.7	+47	+81	+35	+1.76
Marb		RE		Fat	
+.03		0		+.024	
\$ Wean	\$ Feedlot	\$ Grid	\$ Beef		
+55	+60	+15	+75	ANGUSGS Powered by Neogen GenCoast	

## 70 VDAR TWENTY TWENTY 2574

2574 20960773 01/26/24

VDAR HIGH CALIBER  
VDAR TWENTY TWENTY 2020  
V D A R LASS 2579#

VDAR SHOWDOWN 7236

VDAR LASS 0292  
V D A R CS LASS 814

EPDs	Dam	Sire
Birth	+1.4	+4.1
Wean	+60	+58
Year	+94	+107
Milk	+30	+29

Birth Wt		205 Wt		365 wt	
80		602		1028	
CED	Birth	Wean	Year	Milk	Scrotal
+2	+1.6	+55	+83	+24	+59
Marb		RE		Fat	
+.18		+.04		+.029	
\$ Wean	\$ Feedlot	\$ Grid	\$ Beef		
+54	+58	+22	+80	ANGUSGS Powered by Neogen GenCoast	

## 71 VDAR TWENTY TWENTY 2514

2514 20960768 01/24/24

VDAR HIGH CALIBER  
VDAR TWENTY TWENTY 2020  
V D A R LASS 2579#

VDAR GREAT PLAINS 4008

VDAR LASS 1566  
VDAR LASS 9063

EPDs	Dam	Sire
Birth	-0.7	+4.1
Wean	+46	+58
Year	+83	+107
Milk	+35	+29

Birth Wt		205 Wt		365 wt	
77		643		1041	
CED	Birth	Wean	Year	Milk	Scrotal
+7	+0.0	+45	+80	+29	+66
Marb		RE		Fat	
+.45		+.05		+.026	
\$ Wean	\$ Feedlot	\$ Grid	\$ Beef		
+51	+64	+35	+99	ANGUSGS Powered by Neogen GenCoast	

## 72 VDAR TWENTY TWENTY 2814

2814 +20960793 02/20/24

VDAR HIGH CALIBER  
VDAR TWENTY TWENTY 2020  
V D A R LASS 2579#

KA NEW DESIGN 212- 038

V D A R LASS 0464  
V D A R LASS 8356

EPDs	Dam	Sire
Birth	+0.2	+4.1
Wean	+16	+58
Year	+36	+107
Milk	+33	+29

Birth Wt		205 Wt		365 wt	
88		647		1017	
CED	Birth	Wean	Year	Milk	Scrotal
+5	+1.5	+42	+71	+25	+34
Marb		RE		Fat	
+.52		+.25		-.053	
\$ Wean	\$ Feedlot	\$ Grid	\$ Beef		
+41	+54	+47	+101	ANGUSGS Powered by Neogen GenCoast	





**Reference  
Sire**

**VDAR LEGENDARY 1462**

20463626 01/21/22

W R A MIRROR IMAGE T10#

**VDAR MANHATTAN 1379**

V D A R LASS 4113#

V D A R SONNY BOY 1194

**VDAR LASS 9082**

V D A R LASS 2525

CED	Birth	Wean	Year	Milk	Scrotal
+10	+1.5	+64	+98	+27	+.36
Marb		RE		Fat	
+.11		+.02		-.028	
\$ Wean	\$ Feedlot		\$ Grid	\$ Beef	
+69	+47		+22	+69	

*Legendary* was one of our top picks and the high-seller of our 2023 bull sale at \$20,000 to VLS Angus, Dunn Center, ND. He comes from a tremendous cow line, his dam was a full sister to VDAR Gallatin 7586, a staple herd bull of ours for the last 7 years. *Legendary* himself has great feet, a wonderful attitude, and lots of depth and power. His first calves had ratios of 99 at birth and 102 at yearling.



**73**

**VDAR LEGENDARY 2634**

2634 20961967 01/29/24

VDAR MANHATTAN 1379

**VDAR LEGENDARY 1462**

VDAR LASS 9082

VDAR HIGH CALIBER

**VDAR LASS 0246**

V D A R LASS 4100

EPDs	Dam	Sire
Birth	-1.2	+1.5
Wean	+60	+64
Year	+101	+98
Milk	+32	+27

Birth Wt		205 Wt		365 Wt	
88		685		1176	
CED	Birth	Wean	Year	Milk	Scrotal
+13	+0.6	+65	+108	+32	+51
Marb		RE		Fat	
+.21		+.22		-.011	
\$ Wean	\$ Feedlot		\$ Grid	\$ Beef	
+69	+72		+28	+100	



**74**

**VDAR LEGENDARY 2484**

2484 20960766 01/23/24

VDAR MANHATTAN 1379

**VDAR LEGENDARY 1462**

VDAR LASS 9082

VDAR HIGH CALIBER

**VDAR ANN 0252**

VDAR ANN 6492

EPDs	Dam	Sire
Birth	-0.4	+1.5
Wean	+51	+64
Year	+92	+98
Milk	+33	+27

Birth Wt		205 Wt		365 Wt	
86		658		1136	
CED	Birth	Wean	Year	Milk	Scrotal
+7	+1.3	+59	+102	+26	+.93
Marb		RE		Fat	
+.12		-.03		-.014	
\$ Wean	\$ Feedlot		\$ Grid	\$ Beef	
+54	+56		+21	+77	



**75****VDAR LEGENDARY 2244**

2244 20960757 01/15/24

VDAR MANHATTAN 1379

**VDAR LEGENDARY 1462**

VDAR LASS 9082

VDAR SHOSHONE 7926

**VDAR BEAUTY 8178**

V D A R BEAUTY 9748#

EPDs	Dam	Sire
Birth	+1.3	+1.5
Wean	+50	+64
Year	+81	+98
Milk	+31	+27

Birth Wt		205 Wt		365 wt	
78		624		1083	
CED	Birth	Wean	Year	Milk	Scrotal
+8	+0.4	+54	+89	+29	+7.4
Marb		RE		Fat	
+.28		+.14		-.015	
\$ Wean	\$ Feedlot	\$ Grid	\$ Beef		
+58	+62	+31	+93		

**77****VDAR LEGENDARY 2424**

2424 20960762 01/22/24

VDAR MANHATTAN 1379

**VDAR LEGENDARY 1462**

VDAR LASS 9082

VDAR GREAT PLAINS 4008

**VDAR LASS 0217**

VDAR LASS 8161

EPDs	Dam	Sire
Birth	-0.3	+1.5
Wean	+64	+64
Year	+105	+98
Milk	+26	+27

Birth Wt		205 Wt		365 wt	
83		611		1067	
CED	Birth	Wean	Year	Milk	Scrotal
+11	+1.2	+59	+101	+25	+4.2
Marb		RE		Fat	
+.59		-.16		-.019	
\$ Wean	\$ Feedlot	\$ Grid	\$ Beef		
+62	+64	+43	+107		

**ANGUS**  
Powered by Merger GenCo**76****VDAR LEGENDARY 2554**

2554 20960772 01/25/24

VDAR MANHATTAN 1379

**VDAR LEGENDARY 1462**

VDAR LASS 9082

VDAR GREAT PLAINS 4008

**VDAR LUCY 1525**

VDAR LUCY 9054#

EPDs	Dam	Sire
Birth	+3.0	+1.5
Wean	+55	+64
Year	+101	+98
Milk	+36	+27

Birth Wt		205 Wt		365 wt	
63		720		1141	
CED	Birth	Wean	Year	Milk	Scrotal
+3	+3.8	+64	+103	+26	-.44
Marb		RE		Fat	
+.31		+.44		-.062	
\$ Wean	\$ Feedlot	\$ Grid	\$ Beef		
+58	+73	+39	+112		

**ANGUS**  
Powered by Merger GenCo**78****VDAR LEGENDARY 2544**

2544 20960771 01/25/24

VDAR MANHATTAN 1379

**VDAR LEGENDARY 1462**

VDAR LASS 9082

VDAR GREAT PLAINS 4008

**VDAR LUCY 1525**

VDAR LUCY 9054#

EPDs	Dam	Sire
Birth	+3.0	+1.5
Wean	+55	+64
Year	+101	+98
Milk	+36	+27

Birth Wt		205 Wt		365 wt	
61		656		1030	
CED	Birth	Wean	Year	Milk	Scrotal
+4	+3.0	+60	+91	+29	+0.01
Marb		RE		Fat	
+.14		+.22		-.061	
\$ Wean	\$ Feedlot	\$ Grid	\$ Beef		
+64	+50	+29	+79		

**ANGUS**  
Powered by Merger GenCo

Bernard Betz Family, Clearmont, WY

**VDAR**



**Reference Sire**

**VDAR MONTANA 6501**

20180788 01/22/21  
 V D A R HERO 7072  
**V D A R SONNY BOY 1194**  
 V D A R LASS 2582  
 KA NEW DESIGN 212- 038  
**V D A R LASS 0464**  
 V D A R LASS 8356

CED	Birth	Wean	Year	Milk	Scrotal
+7	+3.8	+57	+106	+33	+1.02
Marb		RE		Fat	
+.27		+.49		-.027	
\$ Wean	\$ Feedlot	\$ Grid	\$ Beef		
+48	+92	+36	+128		

*Montana is an exciting new sire. New can be a relative term though, as his genetics are historical and well established within our herd. He's a 3/4 brother to Gallatin, and a maternal brother to Stout 1623. His first calves blew the doors off for growth, with ratios of 106 on weaning and 104 on yearling. The daughters look fantastic, and we expect them to turn into cows like his donor dam, who stayed here until she was 13 years old!*

Co-Owned with Clausen Family Farms, Grand Island NE.

Semen Available

**79**

**VDAR MONTANA 2584**

2584 20960774 01/27/24  
 V D A R SONNY BOY 1194  
**VDAR MONTANA 6501**  
 V D A R LASS 0464  
 V D A R CEDAR WIND 8111#  
**VDAR ROSETTA 7007#**  
 V D A R ROSETTA 5838

EPDs	Dam	Sire
Birth	-1.2	+3.8
Wean	+49	+57
Year	+82	+106
Milk	+29	+33

Birth Wt	205 Wt	365 wt			
90	745	1222			
CED	Birth	Wean	Year	Milk	Scrotal
+5	+2.7	+56	+95	+29	+5.4
Marb		RE		Fat	
+.29		+.21		-.034	
\$ Wean	\$ Feedlot	\$ Grid	\$ Beef		
+54	+76	+34	+110		



**80**

**VDAR MONTANA 2124**

2124 20960755 01/10/24  
 V D A R SONNY BOY 1194  
**VDAR MONTANA 6501**  
 V D A R LASS 0464  
 V D A R BLACK CEDAR 2114  
**VDAR FOREVER LADY 8120**  
 V D A R FOREVER LADY 4106#

EPDs	Dam	Sire
Birth	-0.5	+3.8
Wean	+55	+57
Year	+89	+106
Milk	+20	+33

Birth Wt	205 Wt	365 wt			
87	736	1130			
CED	Birth	Wean	Year	Milk	Scrotal
+2	+3.6	+69	+113	+19	+5.9
Marb		RE		Fat	
+.48		+.89		-.067	
\$ Wean	\$ Feedlot	\$ Grid	\$ Beef		
+53	+102	+53	+156		

**81**

**VDAR MONTANA 2674**

2674 20960781 02/01/24  
 V D A R SONNY BOY 1194  
**VDAR MONTANA 6501**  
 V D A R LASS 0464  
 V D A R BLACK TRAIN 1243  
**V D A R LAVILLON 5847#**  
 V D A R LAVILLON 4731

EPDs	Dam	Sire
Birth	+1.9	+3.8
Wean	+43	+57
Year	+80	+106
Milk	+30	+33

Birth Wt	205 Wt	365 wt			
91	647	1170			
CED	Birth	Wean	Year	Milk	Scrotal
+4	+3.4	+49	+96	+32	+8.6
Marb		RE		Fat	
+.25		+.25		-.009	
\$ Wean	\$ Feedlot	\$ Grid	\$ Beef		
+40	+82	+31	+112		



**82**

**VDAR MONTANA 2144**

2144 20961895 01/11/24  
 V D A R SONNY BOY 1194  
**VDAR MONTANA 6501**  
 V D A R LASS 0464  
 VDAR GREAT PLAINS 4008  
**VDAR LASS 1557**  
 VDAR LASS 9098

EPDs	Dam	Sire
Birth	-0.7	+3.8
Wean	+42	+57
Year	+78	+106
Milk	+23	+33

Birth Wt	205 Wt	365 wt			
75	676	1119			
CED	Birth	Wean	Year	Milk	Scrotal
+8	+0.8	+52	+95	+28	+1.00
Marb		RE		Fat	
+.27		+.25		-.017	
\$ Wean	\$ Feedlot	\$ Grid	\$ Beef		
+50	+82	+32	+114		



**83****VDAR MONTANA 2534**

2534 20960770 01/25/24

V D A R SONNY BOY 1194

**VDAR MONTANA 6501**

V D A R LASS 0464

VDAR HIGH CALIBER

**VDAR HAZEL 1514**

V D A R HAZEL 1400

EPDs	Dam	Sire
Birth	+1.6	+3.8
Wean	+55	+57
Year	+101	+106
Milk	+32	+33

Birth Wt		205 Wt		365 wt	
86		698		1135	
CED	Birth	Wean	Year	Milk	Scrotal
+7	+3.4	+53	+99	+33	+32
Marb		RE		Fat	
+.48		+.25		-.038	
\$ Wean	\$ Feedlot	\$ Grid	\$ Beef		
+48	+79	+44	+122		

**ANGUS**  
Powered by Neogen GenScan**85****VDAR MONTANA 2644**

2644 20960778 01/29/24

V D A R SONNY BOY 1194

**VDAR MONTANA 6501**

V D A R LASS 0464

DFA HERO 6017#

**V D A R ANN 3127**

SHADY ASH ANN 1406

EPDs	Dam	Sire
Birth	+0.7	+3.8
Wean	+58	+57
Year	+88	+106
Milk	+20	+33

Birth Wt		205 Wt		365 wt	
84		633		1071	
CED	Birth	Wean	Year	Milk	Scrotal
+5	+1.9	+57	+100	+29	+1.26
Marb		RE		Fat	
+.40		+.44		-.012	
\$ Wean	\$ Feedlot	\$ Grid	\$ Beef		
+57	+86	+40	+126		

**ANGUS**  
Powered by Neogen GenScan**84****VDAR MONTANA 2654**

2654 20960779 01/31/24

V D A R SONNY BOY 1194

**VDAR MONTANA 6501**

V D A R LASS 0464

HA WINDFALL 6011

**V D A R ELLUNA 1416**

V D A R ELLUNA 9720

EPDs	Dam	Sire
Birth	+0.5	+3.8
Wean	+36	+57
Year	+72	+106
Milk	+29	+33

Birth Wt		205 Wt		365 wt	
85		634		1100	
CED	Birth	Wean	Year	Milk	Scrotal
+7	+1.1	+38	+73	+41	+1.15
Marb		RE		Fat	
+.26		-.07		+.030	
\$ Wean	\$ Feedlot	\$ Grid	\$ Beef		
+48	+64	+24	+88		

**ANGUS**  
Powered by Neogen GenScan**86****VDAR MONTANA 2484**

2474 20960765 01/23/24

V D A R SONNY BOY 1194

**VDAR MONTANA 6501**

V D A R LASS 0464

VDAR MANHATTAN 1379

**VDAR LAVILLON 1548**

V D A R LAVILLON 5847#

EPDs	Dam	Sire
Birth	+0.9	+3.8
Wean	+54	+57
Year	+88	+106
Milk	+32	+33

Birth Wt		205 Wt		365 wt	
86		640		1064	
CED	Birth	Wean	Year	Milk	Scrotal
-2	+3.5	+49	+87	+38	+67
Marb		RE		Fat	
+.06		+.07		-.033	
\$ Wean	\$ Feedlot	\$ Grid	\$ Beef		
+49	+66	+21	+87		

**ANGUS**  
Powered by Neogen GenScan**VDAR**

**Reference Sire**

**VDAR 4321 XXP 5629**

+19716381 01/27/19

N BAR EMULATION EXT#  
**SINCLAIR EMULATION XXP#**  
 N BAR PRIMROSE Y3051#  
 KOUPAL JUNEAU 797#  
**V D A R BEAUTY 4321#**  
 V D A R BEAUTY 0355

<b>CE</b>	<b>B</b>	<b>W</b>	<b>Y</b>	<b>M</b>	<b>S</b>
+1	+1.9	+70	+119	+27	+90
<b>Marb</b>		<b>RE</b>		<b>Fat</b>	
+.29		+.07		+.047	
<b>\$ Wean</b>	<b>\$ Feedlot</b>	<b>\$ Grid</b>	<b>\$ Beef</b>		
+67	+84	+26	+110		

**VDAR 4321 XXP 5629** is a powerfully made, masculine herdsire who we used in herd for his incredible maternal potential. He's out of the great VDAR Beauty 4321 and sired by Sinclair Emulation XXP.

**V-D-A-R-Beauty-4321**



Dam of VDAR 4321 XXP 5629



**88**

**VDAR XXP 1304**

1304 20900037 01/23/24

SINCLAIR EMULATION XXP#  
**VDAR 4321 XXP 5629**  
 V D A R BEAUTY 4321#  
 KOUPAL JUNEAU 797#  
**V D A R LASS 4331**  
 VDAR LASS 4617#

<b>EPDs</b>	<b>Dam</b>	<b>Sire</b>
<b>Birth</b>	+2.1	+1.9
<b>Wean</b>	+62	+70
<b>Year</b>	+109	+119
<b>Milk</b>	+36	+27

<b>Birth Wt</b>		<b>205 Wt</b>		<b>365 wt</b>	
89		765		1211	
<b>CE</b>	<b>B</b>	<b>W</b>	<b>Y</b>	<b>M</b>	<b>S</b>
-2	+3.9	+72	+121	+35	+1.96
<b>Marb</b>		<b>RE</b>		<b>Fat</b>	
+.26		+.31		+.036	
<b>\$ Wean</b>	<b>\$ Feedlot</b>	<b>\$ Grid</b>	<b>\$ Beef</b>		
+69	+84	+29	+113		



**87**

**VDAR XXP 1334**

1334 20900040 01/27/24

SINCLAIR EMULATION XXP#  
**VDAR 4321 XXP 5629**  
 V D A R BEAUTY 4321#  
 V D A R STOUT 6287  
**VDAR POLLY 0758**  
 V D A R POLLY 5344

<b>EPDs</b>	<b>Dam</b>	<b>Sire</b>
<b>Birth</b>	+2.9	+1.9
<b>Wean</b>	+65	+70
<b>Year</b>	+115	+119
<b>Milk</b>	+29	+27

<b>Birth Wt</b>		<b>205 Wt</b>		<b>365 wt</b>	
108		767		1327	
<b>CE</b>	<b>B</b>	<b>W</b>	<b>Y</b>	<b>M</b>	<b>S</b>
0	+4.0	+76	+131	+28	+1.37
<b>Marb</b>		<b>RE</b>		<b>Fat</b>	
+.33		+.38		+.022	
<b>\$ Wean</b>	<b>\$ Feedlot</b>	<b>\$ Grid</b>	<b>\$ Beef</b>		
+62	+101	+34	+135		



**89**

**VDAR XXP 1474**

1474 20900052 02/05/24

SINCLAIR EMULATION XXP#  
**VDAR 4321 XXP 5629**  
 V D A R BEAUTY 4321#  
 G BAR WULFF EXT 8314  
**V D A R MISS WIX 7928**  
 V D A R MISS WIX 4330

<b>EPDs</b>	<b>Dam</b>	<b>Sire</b>
<b>Birth</b>	-3.8	+1.9
<b>Wean</b>	+39	+70
<b>Year</b>	+70	+119
<b>Milk</b>	+22	+27

<b>Birth Wt</b>		<b>205 Wt</b>		<b>365 wt</b>	
89		650		1183	
<b>CE</b>	<b>B</b>	<b>W</b>	<b>Y</b>	<b>M</b>	<b>S</b>
+11	+0.1	+56	+105	+29	+5.3
<b>Marb</b>		<b>RE</b>		<b>Fat</b>	
+.35		+.18		+.055	
<b>\$ Wean</b>	<b>\$ Feedlot</b>	<b>\$ Grid</b>	<b>\$ Beef</b>		
+55	+78	+30	+108		



Will Wipf  
 of Springdale Colony



**90** **VDAR XXP 1284**  
 1284 20900036 01/24/24  
 SINCLAIR EMULATION XXP#  
**VDAR 4321 XXP 5629**  
 V D A R BEAUTY 4321#  
 GLC CHURCHILL 228  
**VDAR ELLUNA 0762**  
 V D A R ELLUNA 8349

EPDs	Dam	Sire
Birth	+1.2	+1.9
Wean	+48	+70
Year	+81	+119
Milk	+30	+27

Birth Wt	205 Wt	365 wt
94	680	1163

CED	Birth	Wean	Year	Milk	Scrotal
+6	+0.3	+59	+96	+35	+79

Marb	RE	Fat
+58	+19	-008

\$ Wean	\$ Feedlot	\$ Grid	\$ Beef
+71	+50	+46	+95

**ANGUSGS**  
 Powered by Neogen GenCo

**93** **VDAR XXP 1534**  
 1534 20900058 02/11/24  
 SINCLAIR EMULATION XXP#  
**VDAR 4321 XXP 5629**  
 V D A R BEAUTY 4321#  
 V D A R CEDAR WIND 5126  
**VDAR ELLUNA 9244**  
 V D A R ELLUNA 8652#

EPDs	Dam	Sire
Birth	+1.5	+1.9
Wean	+55	+70
Year	+91	+119
Milk	+25	+27

Birth Wt	205 Wt	365 wt
98	708	1074

CED	Birth	Wean	Year	Milk	Scrotal
+5	+1.8	+68	+119	+28	+1.72

Marb	RE	Fat
+12	+22	-.020

\$ Wean	\$ Feedlot	\$ Grid	\$ Beef
+67	+80	+25	+105

**ANGUSGS**  
 Powered by Neogen GenCo

**91** **VDAR XXP 1214**  
 1214 20900031 01/22/24  
 SINCLAIR EMULATION XXP#  
**VDAR 4321 XXP 5629**  
 V D A R BEAUTY 4321#  
 V D A R CEDAR WIND 5126  
**VDAR ELLUNA 9237**  
 V D A R ELLUNA 8652#

EPDs	Dam	Sire
Birth	+2.2	+1.9
Wean	+78	+70
Year	+128	+119
Milk	+15	+27

Birth Wt	205 Wt	365 wt
80	796	1196

CED	Birth	Wean	Year	Milk	Scrotal
+3	+2.8	+80	+131	+19	+1.79

Marb	RE	Fat
-.02	+38	+005

\$ Wean	\$ Feedlot	\$ Grid	\$ Beef
+67	+98	+18	+116

**ANGUSGS**  
 Powered by Neogen GenCo

**94** **VDAR XXP 1564**  
 1564 20937951 02/15/24  
 SINCLAIR EMULATION XXP#  
**VDAR 4321 XXP 5629**  
 V D A R BEAUTY 4321#  
 O C C JUNEAU 807J#  
**V D A R BEAUTY 3345#**  
 V D A R BEAUTY 0370

EPDs	Dam	Sire
Birth	+1.4	+1.9
Wean	+46	+70
Year	+79	+119
Milk	+27	+27

Birth Wt	205 Wt	365 wt
87	653	1090

CED	Birth	Wean	Year	Milk	Scrotal
+5	+0.9	+63	+107	+27	+1.04

Marb	RE	Fat
+15	+09	+040

\$ Wean	\$ Feedlot	\$ Grid	\$ Beef
+63	+72	+20	+93

**ANGUSGS**  
 Powered by Neogen GenCo



**95** **VDAR XXP 1494**  
 1494 20900054 02/06/24  
 SINCLAIR EMULATION XXP#  
**VDAR 4321 XXP 5629**  
 V D A R BEAUTY 4321#  
 V D A R CEDAR WIND 5126  
**VDAR ELLUNA 9218**  
 V D A R ELLUNA 7913

EPDs	Dam	Sire
Birth	-0.1	+1.9
Wean	+69	+70
Year	+112	+119
Milk	+25	+27

Birth Wt	205 Wt	365 wt
86	664	1030

CED	Birth	Wean	Year	Milk	Scrotal
+9	+1.4	+69	+119	+28	+1.08

Marb	RE	Fat
+46	+30	+046

\$ Wean	\$ Feedlot	\$ Grid	\$ Beef
+72	+86	+37	+123

**ANGUSGS**  
 Powered by Neogen GenCo

**92** **VDAR XXP 1574**  
 1574 20900061 02/16/24  
 SINCLAIR EMULATION XXP#  
**VDAR 4321 XXP 5629**  
 V D A R BEAUTY 4321#  
 VDAR SHOWDOWN 7236  
**V D A R POLLY 8343**  
 V D A R POLLY 4315#

EPDs	Dam	Sire
Birth	+1.4	+1.9
Wean	+60	+70
Year	+96	+119
Milk	+28	+27

Birth Wt	205 Wt	365 wt
95	780	1188

CED	Birth	Wean	Year	Milk	Scrotal
+4	+1.8	+68	+113	+24	+0.09

Marb	RE	Fat
+22	+03	+048

\$ Wean	\$ Feedlot	\$ Grid	\$ Beef
+67	+100	+22	+122

**ANGUSGS**  
 Powered by Neogen GenCo



**Reference Sire**

**CFF 79 WINDY 8423**

19388540 01/23/18

CROOK MT REALLY WINDY 141#

**B BAR WINDY 79**

B BAR LADY JEWEL 116#

V D A R ROYAL DUKE 8052

**CFF LADY ROYAL DUKE 423**

CFF 600 PA LADY 846

<b>CED</b>	<b>Birth</b>	<b>Wean</b>	<b>Year</b>	<b>Milk</b>	<b>Scrotal</b>
+10	-1.1	+62	+103	+26	+1.62
<b>Marb</b>		<b>RE</b>		<b>Fat</b>	
-.02		+.76		+.021	
<b>\$ Wean</b>	<b>\$ Feedlot</b>	<b>\$ Grid</b>	<b>\$ Beef</b>		
+64	+79	+22	+101		

**8423** is a paternal brother to Black Mass and goes back to the VDAR Elluna cow family on the bottom side. He is a heifer bull that has provided consistent calving ease along with having extra bone, muscle and scrotal circumference.



**96**

**VDAR WINDY 2234**

2234 20966655 01/14/24

B BAR WINDY 79

**CFF 79 WINDY 8423**

V D A R DEBBIE 423

B BAR WINDY 98

**V D A R LASS 0466**

V D A R CS LASS 814

<b>EPDs</b>	<b>Dam</b>	<b>Sire</b>
<b>Birth</b>	+0.2	-1.1
<b>Wean</b>	+24	+62
<b>Year</b>	+37	+103
<b>Milk</b>	+32	+26

<b>Birth Wt</b>	<b>205 Wt</b>	<b>365 wt</b>			
83	674	1122			
<b>CED</b>	<b>Birth</b>	<b>Wean</b>	<b>Year</b>	<b>Milk</b>	<b>Scrotal</b>
+7	-0.7	+41	+71	+33	+1.76
<b>Marb</b>		<b>RE</b>		<b>Fat</b>	
+.11		+.27		+.009	
<b>\$ Wean</b>	<b>\$ Feedlot</b>	<b>\$ Grid</b>	<b>\$ Beef</b>		
+51	+46	+23	+69		



**97**

**VDAR WINDY 1044**

1044 20951513 01/11/24

B BAR WINDY 79

**CFF 79 WINDY 8423**

CFF LADY ROYAL DUKE 423

VDAR YELLOWSTONE 5589

**VDAR POLLY 2424**

VDAR POLLY 0712

<b>EPDs</b>	<b>Dam</b>	<b>Sire</b>
<b>Birth</b>	+0.0	-1.1
<b>Wean</b>	+42	+62
<b>Year</b>	+82	+103
<b>Milk</b>	+38	+26

<b>Birth Wt</b>	<b>205 Wt</b>	<b>365 wt</b>			
64	725	1138			
<b>CED</b>	<b>Birth</b>	<b>Wean</b>	<b>Year</b>	<b>Milk</b>	<b>Scrotal</b>
+12	-0.9	+62	+101	+35	+1.53
<b>Marb</b>		<b>RE</b>		<b>Fat</b>	
+.27		+.49		+.009	
<b>\$ Wean</b>	<b>\$ Feedlot</b>	<b>\$ Grid</b>	<b>\$ Beef</b>		
+76	+60	+33	+93		



**98**

**VDAR WINDY 2174**

2174 20966649 01/12/24

B BAR WINDY 79

**CFF 79 WINDY 8423**

V D A R DEBBIE 423

VDAR TWENTY TWENTY 2020

**VDAR LUCY 2337**

VDAR LUCY 7027#

<b>EPDs</b>	<b>Dam</b>	<b>Sire</b>
<b>Birth</b>	+1.3	-1.1
<b>Wean</b>	+59	+62
<b>Year</b>	+104	+103
<b>Milk</b>	+28	+26

<b>Birth Wt</b>	<b>205 Wt</b>	<b>365 wt</b>			
68	712	1123			
<b>CED</b>	<b>Birth</b>	<b>Wean</b>	<b>Year</b>	<b>Milk</b>	<b>Scrotal</b>
+10	-0.8	+64	+106	+27	+0.80
<b>Marb</b>		<b>RE</b>		<b>Fat</b>	
+.10		+.40		+.027	
<b>\$ Wean</b>	<b>\$ Feedlot</b>	<b>\$ Grid</b>	<b>\$ Beef</b>		
+65	+82	+23	+104		





**100** **VDAR WINDY 2304**  
 2304 20966652 01/18/24  
 B BAR WINDY 79  
**CFF 79 WINDY 8423**  
 V D A R DEBBIE 423  
 VDAR MANHATTAN 1379  
**VDAR LASS 2311**  
 VDAR LASS 7092

EPDs	Dam	Sire
Birth	-1.0	-1.1
Wean	+57	+62
Year	+91	+103
Milk	+35	+26

Birth Wt	205 Wt	365 wt			
70	700	1114			
CED	Birth	Wean	Year	Milk	Scrotal
+11	-1.5	+61	+98	+31	+1.67
Marb	RE	Fat			
+0.01	+0.49	-0.007			
\$ Wean	\$ Feedlot	\$ Grid	\$ Beef		
+69	+69	+22	+90		

**99** **VDAR WINDY 1294**  
 1294 20951512 01/23/24  
 B BAR WINDY 79  
**CFF 79 WINDY 8423**  
 CFF LADY ROYAL DUKE 423  
 V D A R HERO 7072  
**VDAR ELLUNA 2435**  
 VDAR ELLUNA 9234

EPDs	Dam	Sire
Birth	+3.5	-1.1
Wean	+57	+62
Year	+109	+103
Milk	+26	+26

Birth Wt	205 Wt	365 wt			
76	766	1150			
CED	Birth	Wean	Year	Milk	Scrotal
+11	+0.6	+65	+113	+22	+1.86
Marb	RE	Fat			
+0.16	+0.22	+0.037			
\$ Wean	\$ Feedlot	\$ Grid	\$ Beef		
+58	+68	+23	+91		

**ANGUS GS**  
 Powered by Merus Genetics

**101** **VDAR WINDY 2104**  
 2104 20966646 01/09/24  
 B BAR WINDY 79  
**CFF 79 WINDY 8423**  
 V D A R DEBBIE 423  
 VDAR GREAT PLAINS 4008  
**VDAR ELLUNA 2351**  
 VDAR ELLUNA 0229

EPDs	Dam	Sire
Birth	+0.9	-1.1
Wean	+69	+62
Year	+121	+103
Milk	+29	+26

Birth Wt	205 Wt	365 wt			
67	701	1088			
CED	Birth	Wean	Year	Milk	Scrotal
+8	+0.8	+68	+115	+38	+1.12
Marb	RE	Fat			
+0.02	+0.40	+0.022			
\$ Wean	\$ Feedlot	\$ Grid	\$ Beef		
+78	+65	+19	+84		

**ANGUS GS**  
 Powered by Merus Genetics



Paul & Lorrie Hanson of Box Elder, MT





**Reference  
Sire**

**VDAR HERO 7072**

17290683 01/08/12

HERO 6267 OF R R 2418#

**DFA HERO 6017#**

D F A ELLURA 502

V D A R REALLY WINDY 4097#

**V D A R HAZEL 0319**

V D A R HAZEL 8650

CED	Birth	Wean	Year	Milk	Scrotal
+17	-1.8	+53	+89	+16	+.50
Marb		RE		Fat	
+.42		+.19		+.029	
\$ Wean	\$ Feedlot	\$ Grid	\$ Beef		
+45	+75	+35	+111		

**VDAR Hero 7072** is a very unique and exciting calving-ease sire who has already had quite an impact in the VDAR herd. His calves come small and early and grow more than you would ever expect! They have extra bone and lots of muscle with a wide dimensional hip! His front feet are as close to perfect as any bull we use and it seems to transmit to his calves. 707's mother is a picture-perfect daughter of VDAR Really Windy 4097 and one of all our visitors' favorites. His first calf crop produced VDAR Sonny Boy who is now one of our main herd sires. We have started to use him again because of his ability to produce fault-free cattle.



**103**

**VDAR HERO 1314**

1314 20900038 01/25/24

DFA HERO 6017#

**V D A R HERO 7072**

V D A R HAZEL 0319

V D A R CEDAR WIND 5126

**VDAR POLLY 2407**

VDAR POLLY 0731

EPDs	Dam	Sire
Birth	-1.0	-1.8
Wean	+72	+53
Year	+118	+89
Milk	+29	+16

Birth Wt		205 Wt		365 wt	
66		679		1148	
CED	Birth	Wean	Year	Milk	Scrotal
+19	-3.2	+66	+115	+21	+.18
Marb		RE		Fat	
+.57		+.39		+.041	
\$ Wean	\$ Feedlot	\$ Grid	\$ Beef		
+64	+81	+44	+125		



**102**

**VDAR HERO 1014**

1014 20900017 01/09/24

DFA HERO 6017#

**V D A R HERO 7072**

V D A R HAZEL 0319

VDAR MAGA 7190

**VDAR POLLY 2447**

V D A R POLLY 8369

EPDs	Dam	Sire
Birth	+1.5	-1.8
Wean	+60	+53
Year	+105	+89
Milk	+28	+16

Birth Wt		205 Wt		365 wt	
79		721		1172	
CED	Birth	Wean	Year	Milk	Scrotal
+11	+0.5	+55	+97	+26	+.35
Marb		RE		Fat	
+.44		-.12		+.043	
\$ Wean	\$ Feedlot	\$ Grid	\$ Beef		
+54	+59	+32	+91		



# 104 OUT OF SALE



**Reference Sire** **VDAR 4321 BLASTOFF 7230**  
 19706014 01/19/20  
 V D A R STOUT 1623  
**V D A R STOUT 6287**  
 V D A R ELLUNA 5378#  
 KOU PAL JUNE AU 797#  
**V D A R BEAU TY 4321#**  
 V D A R BEAU TY 0355

CED	Birth	Wean	Year	Milk	Scrotal
+2	+3.2	+70	+128	+21	+1.48
	Marb		RE		Fat
	+1.18		+0.34		+0.021
\$ Wean	\$ Feedlot	\$ Grid	\$ Beef		
+52	+95	+26	+121		

**105** **VDAR LONE PEAK 2404**  
 2404 20960761 01/20/24  
 VDAR LONE PEAK 2157  
**VDAR LONE PEAK 2050**  
 V D A R LASS 9708  
 SINCLAIR EXQUISITE 6X3  
**VDAR LASS 2318**  
 V D A R LASS 3123

EPDs	Dam	Sire
Birth	+1.0	-1.2
Wean	+36	+52
Year	+60	+97
Milk	+25	+40

Birth Wt	205 Wt	365 wt			
71	673	1079			
CED	Birth	Wean	Year	Milk	Scrotal
+10	-0.7	+48	+81	+33	+1.16
	Marb		RE		Fat
	+0.34		+0.04		+0.034
\$ Wean	\$ Feedlot	\$ Grid	\$ Beef		
+56	+60	+29	+90		



**106** **VDAR LONE PEAK 2034**  
 2034 20960753 01/04/24  
 VDAR LONE PEAK 2157  
**VDAR LONE PEAK 2050**  
 V D A R LASS 9708  
 VDAR MANHATTAN 1379  
**VDAR BEAU TY 2325**  
 V D A R BEAU TY 9748#

EPDs	Dam	Sire
Birth	+0.6	-1.2
Wean	+46	+52
Year	+72	+97
Milk	+25	+40

Birth Wt	205 Wt	365 wt			
64	653	1040			
CED	Birth	Wean	Year	Milk	Scrotal
+9	+1.5	+61	+92	+34	+1.74
	Marb		RE		Fat
	+0.44		+0.13		+0.006
\$ Wean	\$ Feedlot	\$ Grid	\$ Beef		
+71	+53	+37	+90		

**107** **VDAR BLASTOFF 1584**  
 1584 20900062 02/18/24  
 V D A R STOUT 6287  
**VDAR 4321 BLASTOFF 7230**  
 V D A R BEAU TY 4321#  
 VDAR GALLATIN 7586  
**VDAR MISS WIX 0740**  
 V D A R MISS WIX

EPDs	Dam	Sire
Birth	-1.6	+3.2
Wean	+51	+70
Year	+95	+128
Milk	+20	+21

Birth Wt	205 Wt	365 wt			
98	672	1155			
CED	Birth	Wean	Year	Milk	Scrotal
+4	+3.4	+68	+123	+16	+1.17
	Marb		RE		Fat
	+0.18		-0.09		+0.024
\$ Wean	\$ Feedlot	\$ Grid	\$ Beef		
+45	+65	+21	+86		



**108** **VDAR BLASTOFF 1084**  
 1084 20900021 01/13/24  
 V D A R STOUT 6287  
**VDAR 4321 BLASTOFF 7230**  
 V D A R BEAU TY 4321#  
 V D A R CEDAR WIND 8111#  
**V D A R LUCY 8302#**  
 V D A R LUCY 6228

EPDs	Dam	Sire
Birth	-0.6	+3.2
Wean	+51	+70
Year	+84	+128
Milk	+27	+21

Birth Wt	205 Wt	365 wt			
69	616	1046			
CED	Birth	Wean	Year	Milk	Scrotal
+11	-1.1	+46	+79	+19	+1.23
	Marb		RE		Fat
	+0.18		+0.14		+0.006
\$ Wean	\$ Feedlot	\$ Grid	\$ Beef		
+45	+54	+25	+79		







**109** **VDAR BLACK MASS 2184**  
 2184 20963098 01/12/24  
 B BAR WINDY 79  
**B BAR BLACK MASS 3045#**  
 B BAR QUEEN 304#  
 VDAR HIGH CALIBER  
**VDAR ANN 0214**  
 V D A R ANN 3127

EPDs	Dam	Sire
Birth	+0.3	-1.6
Wean	+51	+48
Year	+86	+83
Milk	+24	+25

Birth Wt		205 Wt		365 wt	
84		683		1091	
CED	Birth	Wean	Year	Milk	Scrotal
+11	-1.8	+47	+89	+29	+98
Marb		RE		Fat	
+.12		+.59		+.048	
\$ Wean	\$ Feedlot	\$ Grid	\$ Beef		
+56	+79	+24	+104		

**110** **VDAR BLACK MASS 2084**  
 2084 20963140 01/08/24  
 B BAR WINDY 79  
**B BAR BLACK MASS 3045#**  
 B BAR QUEEN 304#  
 V D A R BLACK TRAIN 1243  
**VDAR LASS 7031**  
 V D A R LASS 0464

EPDs	Dam	Sire
Birth	+2.9	-1.6
Wean	+27	+48
Year	+48	+83
Milk	+25	+25

Birth Wt		205 Wt		365 wt	
74		613		1059	
CED	Birth	Wean	Year	Milk	Scrotal
+7	-0.5	+37	+67	+38	+78
Marb		RE		Fat	
+.10		+.32		+.006	
\$ Wean	\$ Feedlot	\$ Grid	\$ Beef		
+50	+50	+23	+74		

**111** **VDAR BLACK MASS 2274**  
 2274 20963094 01/17/24  
 B BAR WINDY 79  
**B BAR BLACK MASS 3045#**  
 B BAR QUEEN 304#  
 VDAR TWENTY TWENTY 2020  
**VDAR LUCY 2317**  
 VDAR LUCY 9056

EPDs	Dam	Sire
Birth	+2.7	-1.6
Wean	+59	+48
Year	+101	+83
Milk	+33	+25

Birth Wt		205 Wt		365 wt	
83		717		1146	
CED	Birth	Wean	Year	Milk	Scrotal
+12	-0.9	+50	+87	+34	+1.05
Marb		RE		Fat	
+.+.58		+.02		+.091	
\$ Wean	\$ Feedlot	\$ Grid	\$ Beef		
+62	+72	+36	+108		

**112** **VDAR BLACK MASS 2154**  
 2154 20991949 01/11/24  
 B BAR WINDY 79  
**B BAR BLACK MASS 3045#**  
 B BAR QUEEN 304#  
 V D A R CEDAR WIND 8111#  
**V D A R LASS 4100**  
 V D A R LASS 2500

EPDs	Dam	Sire
Birth	-0.6	-1.6
Wean	+60	+48
Year	+105	+83
Milk	+32	+25

Birth Wt		205 Wt		365 wt	
86		686		1086	
CED	Birth	Wean	Year	Milk	Scrotal
+6	+0.1	+59	+98	+32	+1.92
Marb		RE		Fat	
-.07		+.74		-.025	
\$ Wean	\$ Feedlot	\$ Grid	\$ Beef		
+66	+82	+22	+104		

**113** **VDAR BLACK MASS 2354**  
 2354 20963099 01/18/24  
 B BAR WINDY 79  
**B BAR BLACK MASS 3045#**  
 B BAR QUEEN 304#  
 VDAR GREAT PLAINS 4008  
**VDAR LASS 1532**  
 VDAR LASS 9058

EPDs	Dam	Sire
Birth	+3.7	-1.6
Wean	+55	+48
Year	+110	+83
Milk	+32	+25

Birth Wt		205 Wt		365 wt	
72		689		1115	
CED	Birth	Wean	Year	Milk	Scrotal
+5	-0.3	+54	+98	+29	+1.44
Marb		RE		Fat	
+.38		+.85		-.004	
\$ Wean	\$ Feedlot	\$ Grid	\$ Beef		
+54	+103	+44	+146		

**114** **VDAR BLACK MASS 1224**  
 1224 +20900032 01/22/24  
 B BAR WINDY 79  
**B BAR BLACK MASS 3045#**  
 B BAR QUEEN 304#  
 WULFFS EXT 6106#  
**V D A R POLLY 7927#**  
 V D A R POLLY 9697

EPDs	Dam	Sire
Birth	+1.7	-1.6
Wean	+57	+48
Year	+86	+83
Milk	+28	+25

Birth Wt		205 Wt		365 wt	
81		685		1083	
CED	Birth	Wean	Year	Milk	Scrotal
+10	-0.6	+53	+92	+26	+1.19
Marb		RE		Fat	
+.24		+.95		-.027	
\$ Wean	\$ Feedlot	\$ Grid	\$ Beef		
+60	+102	+40	+142		



Dam of Lot 114

# 115 VDAR BLACK MASS 1264

1264 20907152 01/24/24

B BAR WINDY 79  
**B BAR BLACK MASS 3045#**  
 B BAR QUEEN 304#

V D A R CEDAR WIND 5126

**VDAR ELLUNA 9234**

V D A R ELLUNA 8652#

EPDs	Dam	Sire
Birth	+2.1	-1.6
Wean	+62	+48
Year	+112	+83
Milk	+31	+25

Birth Wt		205 Wt		365 wt	
98		704		1082	
CED	Birth	Wean	Year	Milk	Scrotal
+3	+3.1	+61	+107	+31	+2.12
Marb		RE		Fat	
+.39		+.46		+.077	
\$ Wean	\$ Feedlot	\$ Grid	\$ Beef	ANGUSGS	
+57	+99	+34	+133	Powered by Neogen GenCo	

# 116 VDAR BLACK MASS 2684

2684 +20963149 02/01/24

B BAR WINDY 79  
**B BAR BLACK MASS 3045#**  
 B BAR QUEEN 304#

V D A R HERO 5899

**V D A R LASS 2579#**

V D A R LASS 0466

EPDs	Dam	Sire
Birth	+1.0	-1.6
Wean	+37	+48
Year	+55	+83
Milk	+38	+25

Birth Wt		205 Wt		365 wt	
77		644		1082	
CED	Birth	Wean	Year	Milk	Scrotal
+5	-0.5	+52	+83	+37	+1.29
Marb		RE		Fat	
+.26		+.54		+.042	
\$ Wean	\$ Feedlot	\$ Grid	\$ Beef	ANGUSGS	
+69	+79	+31	+109	Powered by Neogen GenCo	

# 117 VDAR COALITION 2384

2384 20962029 01/19/24

HF SYNDICATE 213Z  
**U-2 COALITION 206C#**  
 U2 ERELITE 109Z

VDAR GREAT PLAINS 4008

**VDAR ELLUNA 0248**

VDAR ELLUNA 7008

EPDs	Dam	Sire
Birth	+0.0	+1.1
Wean	+60	+56
Year	+102	+111
Milk	+24	+27

Birth Wt		205 Wt		365 wt	
88		667		1083	
CED	Birth	Wean	Year	Milk	Scrotal
+12	+1.8	+59	+106	+26	+1.34
Marb		RE		Fat	
+.45		+.43		-.013	
\$ Wean	\$ Feedlot	\$ Grid	\$ Beef	ANGUSGS	
+52	+79	+43	+121	Powered by Neogen GenCo	

# 118 VDAR COALITION 1354

1354 20907161 01/28/24

HF SYNDICATE 213Z  
**U-2 COALITION 206C#**  
 U2 ERELITE 109Z

KOUPAL JUNEAU 797#

**V D A R LASS 4356**

V D A R LASS 8658

EPDs	Dam	Sire
Birth	+2.0	+1.1
Wean	+65	+56
Year	+119	+111
Milk	+27	+27

Birth Wt		205 Wt		365 wt	
83		607		1108	
CED	Birth	Wean	Year	Milk	Scrotal
+8	+0.8	+61	+120	+33	+1.03
Marb		RE		Fat	
-.04		+.75		-.035	
\$ Wean	\$ Feedlot	\$ Grid	\$ Beef	ANGUSGS	
+60	+81	+24	+106	Powered by Neogen GenCo	



# 119 VDAR COALITION 2314

2314 20962036 01/18/24

HF SYNDICATE 213Z  
**U-2 COALITION 206C#**  
 U2 ERELITE 109Z

V D A R RITO 953#

**VDAR LASS 8112**

VDAR LASS 6435

EPDs	Dam	Sire
Birth	+0.1	+1.1
Wean	+21	+56
Year	+41	+111
Milk	+28	+27

Birth Wt		205 Wt		365 wt	
88		608		1043	
CED	Birth	Wean	Year	Milk	Scrotal
+8	+1.2	+36	+74	+28	+0.89
Marb		RE		Fat	
+.42		+.26		-.005	
\$ Wean	\$ Feedlot	\$ Grid	\$ Beef	ANGUSGS	
+33	+69	+39	+108	Powered by Neogen GenCo	

# 120 VDAR COALITION 2114

2114 20962014 01/10/24

HF SYNDICATE 213Z  
**U-2 COALITION 206C#**  
 U2 ERELITE 109Z

VDAR LONE PEAK 2157

**VDAR LASS 1542**

VDAR LASS 9035

EPDs	Dam	Sire
Birth	-1.3	+1.1
Wean	+33	+56
Year	+78	+111
Milk	+39	+27

Birth Wt		205 Wt		365 wt	
80		607		1060	
CED	Birth	Wean	Year	Milk	Scrotal
+14	-2.5	+40	+82	+32	+0.77
Marb		RE		Fat	
+.48		-.07		+.025	
\$ Wean	\$ Feedlot	\$ Grid	\$ Beef	ANGUSGS	
+47	+55	+35	+91	Powered by Neogen GenCo	

# 121 VDAR COALITION 2364

2364 20961985 01/18/24

HF SYNDICATE 213Z  
**U-2 COALITION 206C#**  
 U2 ERELITE 109Z

VDAR GREAT PLAINS 4008

**VDAR LASS 1553**

VDAR LASS 9102

EPDs	Dam	Sire
Birth	+1.8	+1.1
Wean	+56	+56
Year	+108	+111
Milk	+33	+27

Birth Wt		205 Wt		365 wt	
78		635		1073	
CED	Birth	Wean	Year	Milk	Scrotal
+9	+0.9	+53	+106	+30	+0.86
Marb		RE		Fat	
+.37		+.61		-.018	
\$ Wean	\$ Feedlot	\$ Grid	\$ Beef	ANGUSGS	
+49	+90	+41	+131	Powered by Neogen GenCo	

# 122 VDAR COALITION 2164

2164 20962026 01/11/24

HF SYNDICATE 213Z  
**U-2 COALITION 206C#**  
 U2 ERELITE 109Z

VDAR GREAT PLAINS 4008

**VDAR LASS 1520**

VDAR LASS 9053#

EPDs	Dam	Sire
Birth	+0.9	+1.1
Wean	+53	+56
Year	+94	+111
Milk	+17	+27

Birth Wt		205 Wt		365 wt	
80		609		1027	
CED	Birth	Wean	Year	Milk	Scrotal
+12	+1.5	+52	+99	+22	+0.57
Marb		RE		Fat	
+.34		+.38		-.005	
\$ Wean	\$ Feedlot	\$ Grid	\$ Beef	ANGUSGS	
+41	+84	+36	+120	Powered by Neogen GenCo	



# 123 VDAR COALITION 2134

2134 20961953 01/11/24  
 HF SYNDICATE 213Z  
**U-2 COALITION 206C#**  
 U2 ERELITE 109Z  
 VDAR GALLATIN 7586  
**VDAR LASS 2315**  
 V D A R LASS 3103

EPDs	Dam	Sire
Birth	-0.1	+1.1
Wean	+50	+56
Year	+83	+111
Milk	+33	+27

Birth Wt		205 Wt		365 wt	
76		645		1031	
CED	Birth	Wean	Year	Milk	Scrotal
+11	+0.6	+52	+93	+30	+61
Marb		RE		Fat	
+.28		+.34		+.001	
\$ Wean	\$ Feedlot	\$ Grid	\$ Beef		
+52	+79	+32	+112		

# 124 VDAR COALITION 2504

2504 20961944 01/24/24  
 HF SYNDICATE 213Z  
**U-2 COALITION 206C#**  
 U2 ERELITE 109Z  
 KA CEDAR WIND 0520  
**VDAR ESTER 2369**  
 VDAR ESTER 0204

EPDs	Dam	Sire
Birth	+1.1	+1.1
Wean	+58	+56
Year	+105	+111
Milk	+28	+27

Birth Wt		205 Wt		365 wt	
91		634		1023	
CED	Birth	Wean	Year	Milk	Scrotal
+8	+1.3	+53	+96	+30	-.12
Marb		RE		Fat	
+.16		+.50		-.024	
\$ Wean	\$ Feedlot	\$ Grid	\$ Beef		
+56	+70	+30	+100		

# 125 VDAR KAWLIGA 1324

1324 20900039 01/27/24  
 V D A R CEDAR WIND 5126  
**VDAR KAWLIGA 2141**  
 V D A R RITA 5313  
 V D A R CEDAR WIND 5126  
**VDAR LASS 1109**  
 VDAR LASS 9248

EPDs	Dam	Sire
Birth	-0.1	-2.5
Wean	+64	+54
Year	+112	+97
Milk	+21	+34

Birth Wt		205 Wt		365 wt	
79		675		1113	
CED	Birth	Wean	Year	Milk	Scrotal
+9	+0.8	+68	+119	+24	+1.07
Marb		RE		Fat	
+.39		+.26		+.036	
\$ Wean	\$ Feedlot	\$ Grid	\$ Beef		
+64	+95	+34	+129		

# 126 VDAR KAWLIGA 1404

1404 20900045 02/01/24  
 V D A R CEDAR WIND 5126  
**VDAR KAWLIGA 2141**  
 V D A R RITA 5313  
 SITZ RESILIENT 10208  
**VDAR LASS 1118**  
 V D A R LASS 6217

EPDs	Dam	Sire
Birth	+1.4	-2.5
Wean	+70	+54
Year	+126	+97
Milk	+27	+34

Birth Wt		205 Wt		365 wt	
84		668		1126	
CED	Birth	Wean	Year	Milk	Scrotal
+4	+1.0	+75	+143	+34	+.88
Marb		RE		Fat	
+1.00		+.28		+.060	
\$ Wean	\$ Feedlot	\$ Grid	\$ Beef		
+74	+98	+62	+159		

# 127 VDAR KAWLIGA 1364

1364 20900042 01/29/24  
 V D A R CEDAR WIND 5126  
**VDAR KAWLIGA 2141**  
 V D A R RITA 5313  
 V D A R CEDAR WIND 5126  
**VDAR MISS TRAVELER 1103**  
 VDAR MISS TRAVELER 9253

EPDs	Dam	Sire
Birth	+1.9	-2.5
Wean	+69	+54
Year	+113	+97
Milk	+23	+34

Birth Wt		205 Wt		365 wt	
92		709		1107	
CED	Birth	Wean	Year	Milk	Scrotal
+5	+1.4	+66	+116	+24	+1.34
Marb		RE		Fat	
+.46		+.16		+.035	
\$ Wean	\$ Feedlot	\$ Grid	\$ Beef		
+62	+66	+36	+102		

# 128 VDAR KAWLIGA 1144

1144 20900027 01/18/24  
 V D A R CEDAR WIND 5126  
**VDAR KAWLIGA 2141**  
 V D A R RITA 5313  
 VDAR MAGA 7190  
**VDAR ELLUNA 2434**  
 VDAR ELLUNA 9240

EPDs	Dam	Sire
Birth	+2.8	-2.5
Wean	+79	+54
Year	+137	+97
Milk	+18	+34

Birth Wt		205 Wt		365 wt	
73		697		1108	
CED	Birth	Wean	Year	Milk	Scrotal
+8	+0.7	+71	+124	+29	+.82
Marb		RE		Fat	
+.89		+.10		+.013	
\$ Wean	\$ Feedlot	\$ Grid	\$ Beef		
+72	+86	+58	+144		

# 129 VDAR KAWLIGA 1484

1484 20900053 02/05/24  
 V D A R CEDAR WIND 5126  
**VDAR KAWLIGA 2141**  
 V D A R RITA 5313  
 V D A R WINSTON 2165  
**VDAR ELLUNA 0704**  
 V D A R ELLUNA 8334

EPDs	Dam	Sire
Birth	+1.5	-2.5
Wean	+45	+54
Year	+83	+97
Milk	+19	+34

Birth Wt		205 Wt		365 wt	
86		658		1095	
CED	Birth	Wean	Year	Milk	Scrotal
+5	+0.6	+54	+101	+23	+1.24
Marb		RE		Fat	
+.44		+.17		+.007	
\$ Wean	\$ Feedlot	\$ Grid	\$ Beef		
+48	+80	+38	+117		



# 130 VDAR KAWLIGA 1434

1434 20900048 02/03/24

V D A R CEDAR WIND 5126  
**VDAR KAWLIGA 2141**  
 V D A R RITA 5313  
 V D A R CEDAR WIND 5126  
**VDAR MISS WIX 0703**  
 V D A R MISS WIX 8337

EPDs	Dam	Sire
Birth	-0.1	-2.5
Wean	+61	+54
Year	+109	+97
Milk	+23	+34

Birth Wt		205 Wt		365 Wt	
85		640		1040	
CED	Birth	Wean	Year	Milk	Scrotal
+13	-1.5	+53	+95	+32	+1.32
Marb		RE		Fat	
+.41		0		+.093	
\$ Wean	\$ Feedlot	\$ Grid	\$ Beef		
+63	+49	+28	+77		

# 131 VDAR KAWLIGA 1464

1464 20900051 02/05/24

V D A R CEDAR WIND 5126  
**VDAR KAWLIGA 2141**  
 V D A R RITA 5313  
 GLC CHURCHILL 228  
**VDAR MISS WIX 1164**  
 V D A R MISS WIX 8368

EPDs	Dam	Sire
Birth	+0.6	-2.5
Wean	+50	+54
Year	+80	+97
Milk	+26	+34

Birth Wt		205 Wt		365 Wt	
88		669		1067	
CED	Birth	Wean	Year	Milk	Scrotal
+6	+0.2	+46	+74	+33	+5.7
Marb		RE		Fat	
+.53		+.05		+.040	
\$ Wean	\$ Feedlot	\$ Grid	\$ Beef		
+61	+48	+38	+86		

# Reference Sire GNERER CLARENCE 1000

20206081 01/18/21

GINGER HILL TREASURE 233  
**V D A R CLARENCE 2285**  
 V D A R ELLUNA 3105  
 V D A R STOUT 1623  
**GNERER MISS STOUT 99**  
 GNERER SUNSET WIND 499

CED	Birth	Wean	Year	Milk	Scrotal
+15	-0.2	+66	+108	+23	+1.53
Marb		RE		Fat	
+.22		+.25		-.010	
\$ Wean	\$ Feedlot	\$ Grid	\$ Beef		
+67	+84	+29	+113		



# 132 VDAR CLARENCE 2724

2724 20960785 02/03/24

V D A R CLARENCE 2285  
**GNERER CLARENCE 1000**  
 GNERER MISS STOUT 99  
 VDAR HIGH CALIBER  
**VDAR LUCY 0224**  
 V D A R LUCY 3170

EPDs	Dam	Sire
Birth	+2.6	-0.2
Wean	+72	+66
Year	+133	+108
Milk	+32	+23

Birth Wt		205 Wt		365 Wt	
81		716		1166	
CED	Birth	Wean	Year	Milk	Scrotal
+15	-2.3	+49	+78	+25	+1.21
Marb		RE		Fat	
+.29		+.22		+.046	
\$ Wean	\$ Feedlot	\$ Grid	\$ Beef		
+60	+56	+28	+84		

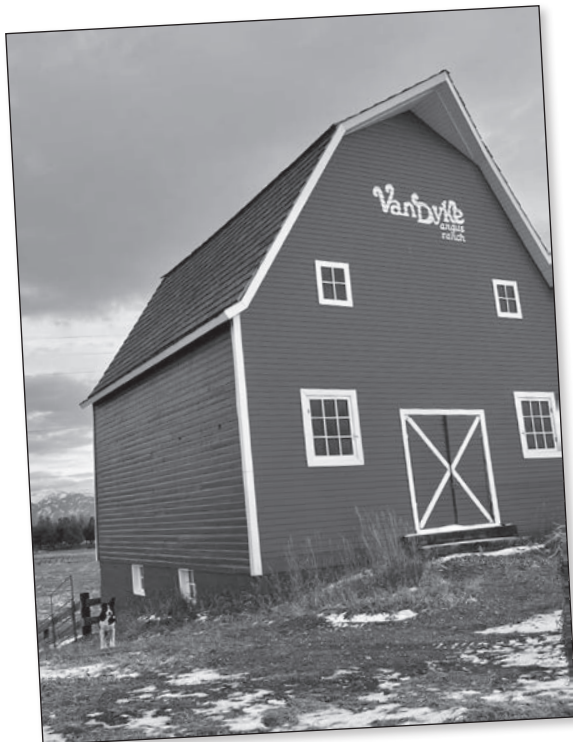
# 133 VDAR CLARENCE 2804

2804 20960792 02/19/24

V D A R CLARENCE 2285  
**GNERER CLARENCE 1000**  
 GNERER MISS STOUT 99  
 HA YELLOWSTONE 3108  
**V D A R ELLUNA 5867#**  
 V D A R ELLUNA 2546

EPDs	Dam	Sire
Birth	+3.2	-0.2
Wean	+59	+66
Year	+108	+108
Milk	+31	+23

Birth Wt		205 Wt		365 Wt	
94		729		1198	
CED	Birth	Wean	Year	Milk	Scrotal
+5	+3.4	+63	+107	+31	+1.45
Marb		RE		Fat	
+.22		+.35		-.002	
\$ Wean	\$ Feedlot	\$ Grid	\$ Beef		
+59	+69	+30	+99		



# 134 VDAR CLARENCE 2824

2824 20960794 02/20/24

V D A R CLARENCE 2285  
**GNERER CLARENCE 1000**  
 GNERER MISS STOUT 99

V D A R MAGA 3068  
**VDAR ELLUNA 0260**  
 V D A R ELLUNA 1416

EPDs	Dam	Sire
Birth	+2.2	-0.2
Wean	+50	+66
Year	+96	+108
Milk	+25	+23

Birth Wt		205 Wt		365 wt	
91		602		1114	
CED	Birth	Wean	Year	Milk	Scrotal
+10	+1.7	+53	+100	+16	+1.17
Marb		RE		Fat	
+.30		+.03		+.011	
\$ Wean	\$ Feedlot	\$ Grid	\$ Beef		
+40	+79	+29	+108		

# 138 VDAR MONTANA 2714

2714 20960784 02/03/24

V D A R SONNY BOY 1194  
**VDAR MONTANA 6501**  
 V D A R LASS 0464

VDAR LONE PEAK 2157  
**CANNON VALLEY LASS 9020**  
 CVR LASS 8312

EPDs	Dam	Sire
Birth	+0.7	+3.8
Wean	+41	+57
Year	+76	+106
Milk	+34	+33

Birth Wt		205 Wt		365 wt	
87		615		1026	
CED	Birth	Wean	Year	Milk	Scrotal
+8	+2.2	+47	+91	+27	+2.01
Marb		RE		Fat	
+.50		+.08		+.013	
\$ Wean	\$ Feedlot	\$ Grid	\$ Beef		
+38	+76	+39	+115		

# 135 VDAR FA CLARENCE 3104

3104 20960805 02/05/24

V D A R CLARENCE 2285  
**GNERER CLARENCE 1000**  
 GNERER MISS STOUT 99

V D A R ROYAL DUKE 4047  
**V D A R PF LINDA 9710**  
 V D A R PF LINDA 7535

EPDs	Dam	Sire
Birth	+3.8	-0.2
Wean	+53	+66
Year	+92	+108
Milk	+22	+23

Birth Wt		205 Wt		365 wt	
78		603		1069	
CED	Birth	Wean	Year	Milk	Scrotal
+8	+2.8	+55	+96	+13	+1.74
Marb		RE		Fat	
+.26		+.40		-.030	
\$ Wean	\$ Feedlot	\$ Grid	\$ Beef		
+29	+76	+34	+111		

# 139 VDAR MONTANA 2734

2734 20960786 02/05/24

V D A R SONNY BOY 1194  
**VDAR MONTANA 6501**  
 V D A R LASS 0464

V D A R REALLY WINDY 4097#  
**V D A R CHLOE 9727**  
 V D A R CHLOE 6320

EPDs	Dam	Sire
Birth	-1.6	+3.8
Wean	+45	+57
Year	+70	+106
Milk	+25	+33

Birth Wt		205 Wt		365 wt	
81		623		1050	
CED	Birth	Wean	Year	Milk	Scrotal
+11	+0.3	+38	+70	+28	+1.09
Marb		RE		Fat	
+.47		+.08		+.029	
\$ Wean	\$ Feedlot	\$ Grid	\$ Beef		
+42	+45	+36	+81		

# 136 VDAR CLARENCE 2624

2624 20960777 01/29/24

V D A R CLARENCE 2285  
**GNERER CLARENCE 1000**  
 GNERER MISS STOUT 99

V D A R SONNY BOY 1194  
**VDAR LUCY 1519**  
 VDAR LUCY 8110

EPDs	Dam	Sire
Birth	+3.4	-0.2
Wean	+47	+66
Year	+88	+108
Milk	+27	+23

Birth Wt		205 Wt		365 wt	
78		609		1052	
CED	Birth	Wean	Year	Milk	Scrotal
+15	-0.8	+46	+87	+26	+1.36
Marb		RE		Fat	
+.38		+.15		+.014	
\$ Wean	\$ Feedlot	\$ Grid	\$ Beef		
+45	+69	+34	+103		

# 140 VDAR EXT 6106 1064

1064 20900019 01/12/24

WULFFS EXT 6106#  
**VDAR EXT 6106 2802**  
 V D A R BEAUTY 4321#

ROSENEATH ADVANCE 427  
**V D A R LUCY 8358**  
 V D A R LUCY 6202

EPDs	Dam	Sire
Birth	-0.9	+2.1
Wean	+58	+70
Year	+116	+117
Milk	+37	+28

Birth Wt		205 Wt		365 wt	
85		763		1278	
CED	Birth	Wean	Year	Milk	Scrotal
+7	+1.6	+68	+121	+23	+3.5
Marb		RE		Fat	
+.74		+.47		+.008	
\$ Wean	\$ Feedlot	\$ Grid	\$ Beef		
+60	+78	+55	+133		

# 137 VDAR FA MONTANA 3074

3074 20960802 01/23/24

V D A R SONNY BOY 1194  
**VDAR MONTANA 6501**  
 V D A R LASS 0464

V D A R BLACK TRAIN 1243  
**V D A R PF HYALITE 5845**  
 V D A R PF HYALITE 7526#

EPDs	Dam	Sire
Birth	+3.0	+3.8
Wean	+50	+57
Year	+85	+106
Milk	+34	+33

Birth Wt		205 Wt		365 wt	
100		666		1031	
CED	Birth	Wean	Year	Milk	Scrotal
+2	+3.7	+53	+96	+32	+1.76
Marb		RE		Fat	
+.21		+.19		+.026	
\$ Wean	\$ Feedlot	\$ Grid	\$ Beef		
+43	+77	+25	+102		



**Reference Sire**

**VDAR EXT 6106 2802**

+20410786 02/13/22  
 N BAR EMULATION EXT#  
**WULFFS EXT 6106#**  
 WULFFS ERICA DIANNA C116  
 KOUPAL JUNEAU 797#  
**V D A R BEAUTY 4321#**  
 V D A R BEAUTY 0355

CED	Birth	Wean	Year	Milk	Scrotal
+6	+2.1	+70	+117	+28	+95
Marb		RE		Fat	
+.26		+.48		+.000	
\$ Wean	\$ Feedlot	\$ Grid	\$ Beef		
+71	+75	+33	+108		



**141**

**VDAR EXT 6106 1074**

1074 20900020 01/12/24  
 WULFFS EXT 6106#  
**VDAR EXT 6106 2802**  
 V D A R BEAUTY 4321#  
 ROSENEATH ADVANCE 427  
**V D A R LUCY 8358**  
 V D A R LUCY 6202

EPDs	Dam	Sire
Birth	-0.9	+2.1
Wean	+58	+70
Year	+116	+117
Milk	+37	+28

Birth Wt		205 Wt		365 wt	
90		803		1277	
CED	Birth	Wean	Year	Milk	Scrotal
+6	+1.5	+71	+119	+35	+1.86
Marb		RE		Fat	
+.60		+.63		+.032	
\$ Wean	\$ Feedlot	\$ Grid	\$ Beef		
+76	+86	+49	+135		

**142**

**VDAR EXT 6106 1274**

1274 20900035 01/24/24  
 WULFFS EXT 6106#  
**VDAR EXT 6106 2802**  
 V D A R BEAUTY 4321#  
 V D A R CEDAR WIND 5126  
**V D A R FOREVER LADY 8335**  
 V D A R FOREVER LADY 0372

EPDs	Dam	Sire
Birth	-1.7	+2.1
Wean	+50	+70
Year	+89	+117
Milk	+22	+28

Birth Wt		205 Wt		365 wt	
75		649		1103	
CED	Birth	Wean	Year	Milk	Scrotal
+8	+0.8	+70	+123	+28	+1.61
Marb		RE		Fat	
+.03		+.29		+.011	
\$ Wean	\$ Feedlot	\$ Grid	\$ Beef		
+73	+64	+19	+83		



**Reference Sire**

**CS KING AIR 1026**

20304112 01/28/21  
 LD CAPITALIST 316#  
**CONNEALY KING AIR**  
 PASHA OF CONANGA 557P#  
 LEACHMAN PARAGON#  
**LEACHMAN BLACKCAP 9004**

CED	Birth	Wean	Year	Milk	Scrotal
+10	+2.6	+74	+127	+16	+50
Marb		RE		Fat	
+.43		+.73		+.011	
\$ Wean	\$ Feedlot	\$ Grid	\$ Beef		
+59	+112	+43	+155		

**143**

**VDAR KING AIR 2774**

2774 20960789 02/16/24  
 CONNEALY KING AIR  
**CS KING AIR 1026**  
 LEACHMAN BLACKCAP 9004  
 VDAR SONNY BOY 2227  
**VDAR LASS 1564**  
 V D A R LASS 3103

EPDs	Dam	Sire
Birth	-0.8	+2.6
Wean	+48	+74
Year	+100	+127
Milk	+26	+16

Birth Wt		205 Wt		365 wt	
72		636		1188	
CED	Birth	Wean	Year	Milk	Scrotal
+13	+1.7	+60	+115	+25	+86
Marb		RE		Fat	
-.04		+.32		-.009	
\$ Wean	\$ Feedlot	\$ Grid	\$ Beef		
+54	+92	+18	+109		

**144**

**VDAR KING AIR 2704**

2704 20960783 02/03/24  
 CONNEALY KING AIR  
**CS KING AIR 1026**  
 LEACHMAN BLACKCAP 9004  
 CROOK MT HERO 116  
**VDAR LASS 1572**  
 V D A R LASS 0468

EPDs	Dam	Sire
Birth	+2.0	+2.6
Wean	+28	+74
Year	+53	+127
Milk	+35	+16

Birth Wt		205 Wt		365 wt	
80		687		1133	
CED	Birth	Wean	Year	Milk	Scrotal
+12	-0.1	+45	+88	+30	+0.08
Marb		RE		Fat	
+.33		+.36		-.014	
\$ Wean	\$ Feedlot	\$ Grid	\$ Beef		
+46	+71	+36	+107		

**145**

**VDAR KING AIR 2794**

2794 20960791 02/19/24  
 CONNEALY KING AIR  
**CS KING AIR 1026**  
 LEACHMAN BLACKCAP 9004  
 HA YELLOWSTONE 4025  
**VDAR LASS 8155**  
 V D A R LASS 3180

EPDs	Dam	Sire
Birth	+1.1	+2.6
Wean	+39	+74
Year	+74	+127
Milk	+34	+16

Birth Wt		205 Wt		365 wt	
82		623		1125	
CED	Birth	Wean	Year	Milk	Scrotal
+8	+1.9	+54	+96	+28	+1.58
Marb		RE		Fat	
+.70		+.47		+.043	
\$ Wean	\$ Feedlot	\$ Grid	\$ Beef		
+55	+87	+51	+138		

**146** **VDAR KING AIR 2694**  
 2694 20960782 02/03/24  
 CONNEALY KING AIR  
**CS KING AIR 1026**  
 LEACHMAN BLACKCAP 9004  
 W R A MIRROR IMAGE T10#  
**VDAR CHLOE 9062**  
 VDAR CHLOE 6473

EPDs	Dam	Sire
Birth	+0.1	+2.6
Wean	+44	+74
Year	+78	+127
Milk	+25	+16

Birth Wt		205 Wt		365 wt	
77		607		1069	
CED	Birth	Wean	Year	Milk	Scrotal
+11	+1.3	+54	+94	+25	+1.07
Marb		RE		Fat	
+.31		+.45		+.015	
\$ Wean	\$ Feedlot	\$ Grid	\$ Beef		
+54	+81	+34	+116		

ANGUSGS  
Powered by Neogen GenScan

**147** **VDAR KING AIR 2614**  
 2614 20960776 01/29/24  
 CONNEALY KING AIR  
**CS KING AIR 1026**  
 LEACHMAN BLACKCAP 9004  
 V D A R CEDAR WIND 8111#  
**V D A R LASS 3103**  
 V D A R LASS 1417

EPDs	Dam	Sire
Birth	-3.9	+2.6
Wean	+33	+74
Year	+65	+127
Milk	+28	+16

Birth Wt		205 Wt		365 wt	
63		611		1048	
CED	Birth	Wean	Year	Milk	Scrotal
+19	-4.1	+45	+78	+18	+5.1
Marb		RE		Fat	
+.46		+.33		-.021	
\$ Wean	\$ Feedlot	\$ Grid	\$ Beef		
+46	+78	+42	+121		

ANGUSGS  
Powered by Neogen GenScan

**V-D-A-R-Lass-3103**



Dam of Lot 147

**148** **VDAR MAGA 1634**  
 1634 20954584 03/07/24  
 V D A R MAGA 3068  
**VDAR MAGA 7250**  
 V D A R POLLY 7929#  
 VDAR SHOWDOWN 7236  
**VDAR POLLY 1152**  
 V D A R POLLY 4382#

EPDs	Dam	Sire
Birth	+3.8	+3.5
Wean	+66	+62
Year	+116	+101
Milk	+26	+29

Birth Wt		205 Wt		365 wt	
84		709			
CED	Birth	Wean	Year	Milk	Scrotal
+4	+2.7	+61	+100	+25	+1.15
Marb		RE		Fat	
+.77		-.17		+.042	
\$ Wean	\$ Feedlot	\$ Grid	\$ Beef		
+53	+58	+47	+105		

ANGUSGS  
Powered by Neogen GenScan

**Reference Sire** **GNERER U2 206C 2821**  
 20427394 01/27/22  
 HF SYNDICATE 213Z  
**U-2 COALITION 206C#**  
 U2 ERELITE 109Z  
 VDAR NEW TREND 3587  
**GNERER MISS PONDEROSA 315**  
 GNERERS MISS PONDEROSA 5346

CED	Birth	Wean	Year	Milk	Scrotal
+14	-0.4	+62	+109	+24	+0.01
Marb		RE		Fat	
+.23		+.50		-.006	
\$ Wean	\$ Feedlot	\$ Grid	\$ Beef		
+58	+81	+32	+113		



**149** **VDAR COALITION 2604**  
 2604 20961962 01/28/24  
 U-2 COALITION 206C#  
**GNERER U2 206C 2821**  
 GNERER MISS PONDEROSA 315  
 VDAR TWENTY TWENTY 2020  
**VDAR LASS 2334**  
 VDAR LASS 9071

EPDs	Dam	Sire
Birth	+2.3	-0.4
Wean	+74	+62
Year	+122	+109
Milk	+28	+24

Birth Wt		205 Wt		365 wt	
69		658		1133	
CED	Birth	Wean	Year	Milk	Scrotal
+8	+0.7	+61	+113	+29	-.14
Marb		RE		Fat	
+.39		+.48		+.013	
\$ Wean	\$ Feedlot	\$ Grid	\$ Beef		
+59	+94	+38	+132		

ANGUSGS  
Powered by Neogen GenScan

**150** **VDAR COALITION 2664**  
 2664 20960780 02/01/24  
 U-2 COALITION 206C#  
**GNERER U2 206C 2821**  
 GNERER MISS PONDEROSA 315  
 VDAR TWENTY TWENTY 2020  
**VDAR LASS 2301**  
 VDAR LASS 8161

EPDs	Dam	Sire
Birth	+3.1	-0.4
Wean	+61	+62
Year	+102	+109
Milk	+25	+24

Birth Wt		205 Wt		365 wt	
75		619		1117	
CED	Birth	Wean	Year	Milk	Scrotal
+3	+2.9	+65	+114	+36	+0.85
Marb		RE		Fat	
+.41		+.07		+.029	
\$ Wean	\$ Feedlot	\$ Grid	\$ Beef		
+61	+76	+33	+109		

ANGUSGS  
Powered by Neogen GenScan



# 151 VDAR COALITION 2434

2434 20960763 01/23/24

U-2 COALITION 206C#  
**GNERER U2 206C 2821**  
 GNERER MISS PONDEROSA 315  
 VDAR GALLATIN 7586  
**VDAR FOREVER LADY 2336**  
 V D A R FOREVER LADY 4106#

EPDs	Dam	Sire
Birth	+0.7	-0.4
Wean	+62	+62
Year	+104	+109
Milk	+26	+24

Birth Wt		205 Wt		365 wt	
69		640		1066	
CED	Birth	Wean	Year	Milk	Scrotal
+7	+2.4	+69	+118	+26	-0.30
Marb		RE		Fat	
+.06		+.46		-.020	
\$ Wean	\$ Feedlot	\$ Grid	\$ Beef		
+64	+76	+25	+100		

# Reference Sire SV POWERBALL 0119

+19918234 07/26/20

E W A PEYTON 642  
**ROSEDA POWERBALL23 F091**  
 ROSEDA BLACKCAP B103 D118  
 S A V FINAL ANSWER 0035#  
**VEEMANS 0035 LLOBELIA 2002**  
 SV 4L60 LADY LOBELIA 8047#

CED	Birth	Wean	Year	Milk	Scrotal
+15	-1.9	+70	+127	+25	+0.73
Marb		RE		Fat	
+.79		+.58		+.078	
\$ Wean	\$ Feedlot	\$ Grid	\$ Beef		
+69	+91	+54	+145		

*Powerball is a bull purchased from good friends, Scott & Vicky Paxton with SV Cattle Co., Sterling, CO. Out of a tremendous donor dam, Powerball has proven to be an excellent, calving-ease sire whose calves are sound and extremely muscular.*

# 152 VDAR COALITION 2784

2784 20960790 02/18/24

U-2 COALITION 206C#  
**GNERER U2 206C 2821**  
 GNERER MISS PONDEROSA 315  
 VDAR GREAT PLAINS 4008  
**VDAR CHLOE 2333**  
 VDAR CHLOE 0265

EPDs	Dam	Sire
Birth	+0.7	-0.4
Wean	+69	+62
Year	+121	+109
Milk	+27	+24

Birth Wt		205 Wt		365 wt	
71		620		1065	
CED	Birth	Wean	Year	Milk	Scrotal
+13	+1.1	+70	+123	+24	+0.45
Marb		RE		Fat	
+.41		+.68		-.003	
\$ Wean	\$ Feedlot	\$ Grid	\$ Beef		
+68	+78	+43	+121		

# 155 VDAR POWERBALL 1544

1544 20900059 02/11/24

ROSEDA POWERBALL23 F091  
**SV POWERBALL 0119**  
 VEEMANS 0035 LLOBELIA 2002  
 VDAR MAGA 7190  
**VDAR POLLY 2456**  
 V D A R POLLY 8343

EPDs	Dam	Sire
Birth	+1.6	-1.9
Wean	+54	+70
Year	+89	+127
Milk	+22	+25

Birth Wt		205 Wt		365 wt	
85		688		1134	
CED	Birth	Wean	Year	Milk	Scrotal
+5	+1.8	+78	+136	+21	+0.64
Marb		RE		Fat	
+.55		+.41		+.117	
\$ Wean	\$ Feedlot	\$ Grid	\$ Beef		
+70	+95	+38	+133		

# 153 VDAR COALITION 2764

2764 20960788 02/12/24

U-2 COALITION 206C#  
**GNERER U2 206C 2821**  
 GNERER MISS PONDEROSA 315  
 VDAR GALLATIN 7586  
**VDAR ELLUNA 2347**  
 V D A R ELLUNA 5848

EPDs	Dam	Sire
Birth	+1.2	-0.4
Wean	+50	+62
Year	+85	+109
Milk	+27	+24

Birth Wt		205 Wt		365 wt	
70		634		1036	
CED	Birth	Wean	Year	Milk	Scrotal
+6	+2.4	+63	+99	+17	+0.51
Marb		RE		Fat	
+.10		+.60		-.007	
\$ Wean	\$ Feedlot	\$ Grid	\$ Beef		
+48	+82	+27	+110		

# 156 OUT OF SALE



# 154 VDAR SUPPER TIME 1164

1164 20900029 01/17/24

V D A R CEDAR WIND 5126  
**VDAR SUPPER TIME 2031**  
 VDAR POLLY 9225  
 VDAR WULFFS ALTITUDE 423  
**V D A R BEAUTY 7983**  
 V D A R BEAUTY 3364

EPDs	Dam	Sire
Birth	+0.0	+3.2
Wean	+46	+78
Year	+77	+132
Milk	+20	+29

Birth Wt		205 Wt		365 wt	
76		607		1028	
CED	Birth	Wean	Year	Milk	Scrotal
+13	-0.3	+62	+106	+21	+0.47
Marb		RE		Fat	
+.36		+.09		+.005	
\$ Wean	\$ Feedlot	\$ Grid	\$ Beef		
+56	+74	+33	+107		





# 157 VДАР POWERBALL 1604

1604 20954041 02/19/24

ROSEDA POWERBALL23 F091

**SV POWERBALL 0119**

VEEMANS 0035 LLOBELIA 2002

VDAR MAGA 7190

**VDAR ELLUNA 2427**

V D A R ELLUNA 6204

EPDs	Dam	Sire
Birth	+3.8	-1.9
Wean	+58	+70
Year	+102	+127
Milk	+7	+25

Birth Wt		205 Wt		365 wt	
78		684		1065	
CED	Birth	Wean	Year	Milk	Scrotal
+11	+0.0	+64	+114	+18	+98
Marb		RE		Fat	
+.80		+.37		+.055	
\$ Wean	\$ Feedlot	\$ Grid	\$ Beef		
+55	+79	+54	+132		



# 158 VДАР POWERBALL 1394

1394 20900044 01/31/24

ROSEDA POWERBALL23 F091

**SV POWERBALL 0119**

VEEMANS 0035 LLOBELIA 2002

V D A R SONNY BOY 1194

**VDAR POLLY 2437**

VDAR POLLY 9239

EPDs	Dam	Sire
Birth	+3.8	-1.9
Wean	+74	+70
Year	+122	+127
Milk	+28	+25

Birth Wt		205 Wt		365 wt	
64		691		1003	
CED	Birth	Wean	Year	Milk	Scrotal
+15	-2.0	+68	+120	+25	+81
Marb		RE		Fat	
+.70		+.58		+.065	
\$ Wean	\$ Feedlot	\$ Grid	\$ Beef		
+71	+81	+51	+131		



The Gibsons of Livingston, MT





*Tom Wulff with the Dummermuth Family  
of White Sulphur Springs, MT*



*Justin Day  
of Meadow, SD*



*Nate Feddes with  
Ed Weidenbach  
of Miles City, MT*



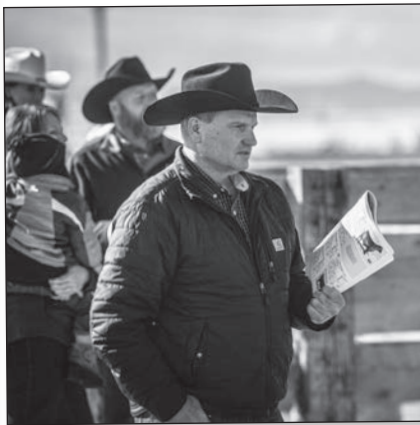
*Ed Reinhardt  
of Plains, MT*



*Greg Lucht of Bozeman, MT*



*Dave & Arnie Wipf of  
Martinsdale Colony*



*Brian Harper of Faith, SD*



*Don Heuchert  
of Hensel, ND*

**We'll See You  
at the Sale!**



**Welcome to Van Dyke Angus Ranch!**

Manhattan

205

Belgrade

90

Bozeman

85

to Billings

Take the Manhattan exit off I-90 and head north.  
Turn right at West Main Street.  
Go east 1 mile. The VDAR sale barn is located on the Frontage Road.

**12393 Frontage Road  
Manhattan, MT 59741**



Lee Van Dyke with Ed Gross of Reardan, WA



Tom Wulff with John Quinn of Stevensville, MT



A Kentucky Connection - Lee Van Dyke with Michael and Emily McGuire of Brownsville, KY and then back to VDAR in Montana

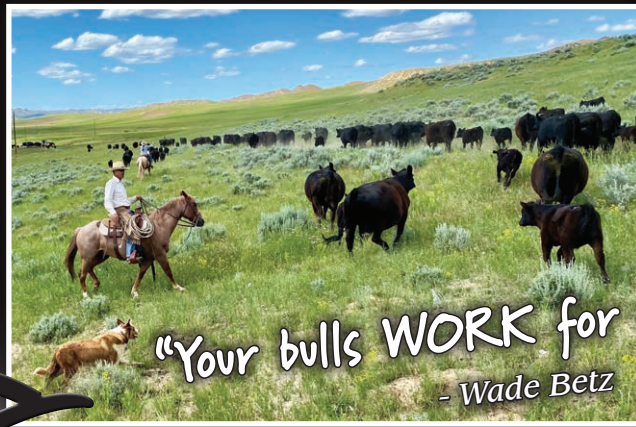


The Mark Kuchar Family of Madison, NE



Jesus Hernandez and Gail Rathbun of Langlois, OR and Tom Swenson of Bandon, OR with Tom Wulff





*"Your bulls WORK for us."*  
- Wade Betz

**Tom Wulff**  
406.580.1606  
twulff@vdar.com

**Charles Pera**  
406.922.7077

**Lee Van Dyke**  
406.579.2585  
lvandyke@vdar.com

**Tim Crabtree**  
406.579.0798  
tcrabtree@vdar.com



**VDAR.com**



12393 Frontage Road  
Manhattan, MT 59741

**FIRST CLASS**  
US Postage  
Paid  
Ballyhoo Printing  
59457



**Van Dyke Angus Ranch  
Cattleman's Advantage**

*Bull Sale*

**February 20, 2025**

12:30 pm MST • Manhattan, Montana

**Selling 130 Yearling & 24 Coming Two Year Old Angus Bulls**

*50 bred heifers from Moore Livestock  
Due to calve May 12 to June 15. Bred to VDAR bulls.*

**DVAuction**  
Broadcasting Real-Time Auctions

